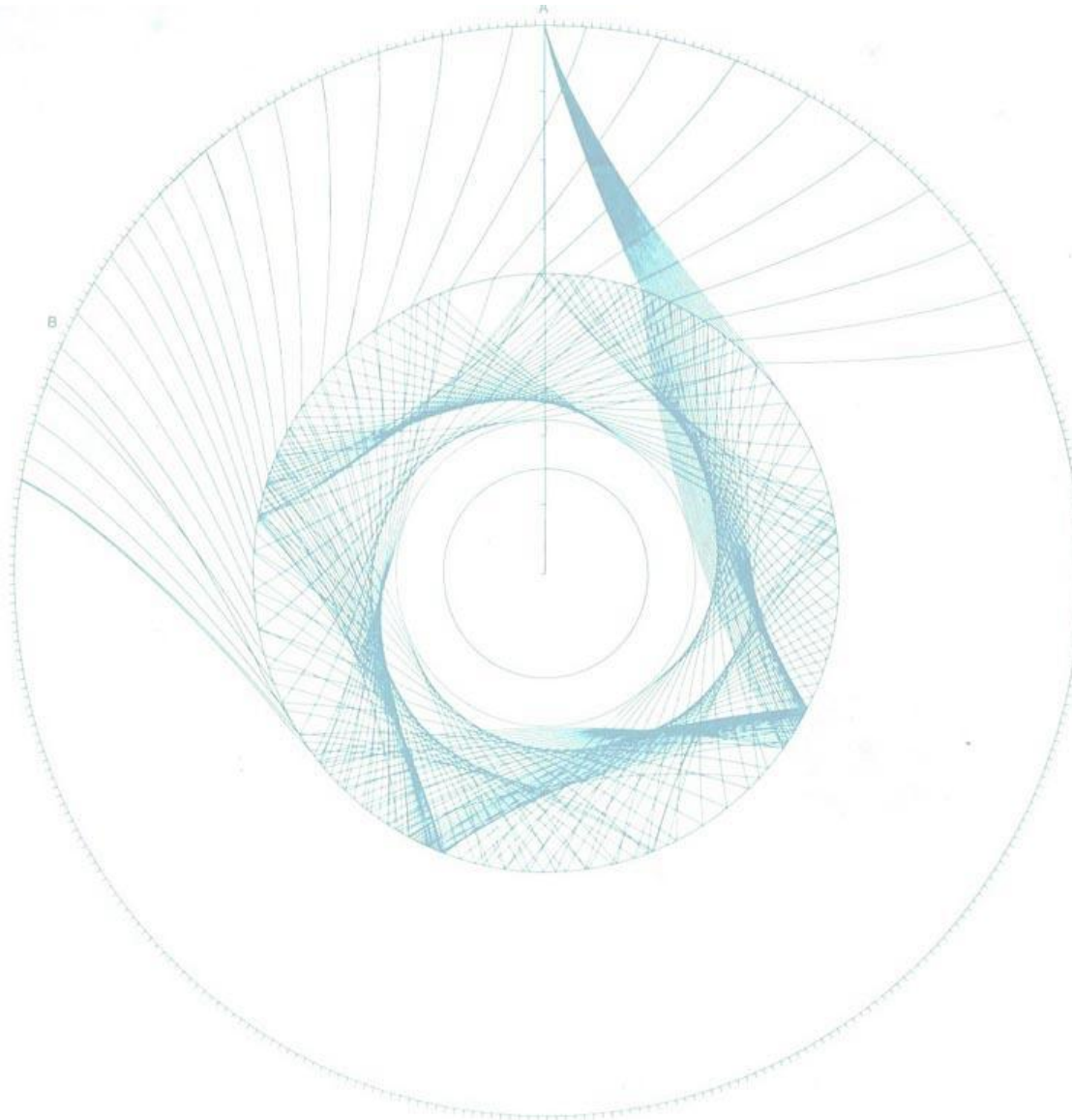
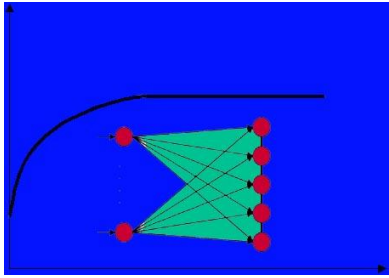


# Petrophysic-Consultants

Geosystems Engineering



Partners:



**GeoNeurale** - München

[www.GeoNeurale.com](http://www.GeoNeurale.com)

Research, Training, Consulting

Main european center of education for Advanced Geosciences.

Trained Geoscientists from most of the major world oil companies

**Beicip-Franlab** - Paris

[www.Beicip.com](http://www.Beicip.com)

With more than 50 years activity in the Reservoir Analysis for oil exploration, affiliated to the Institute Francais du Petrole, is worldwide one of the top consulting companies for reservoir studies. Worldwide the number one for carbonate reservoirs

*In2Earth Modeling* – Basel

[www.In2Earth.com](http://www.In2Earth.com)

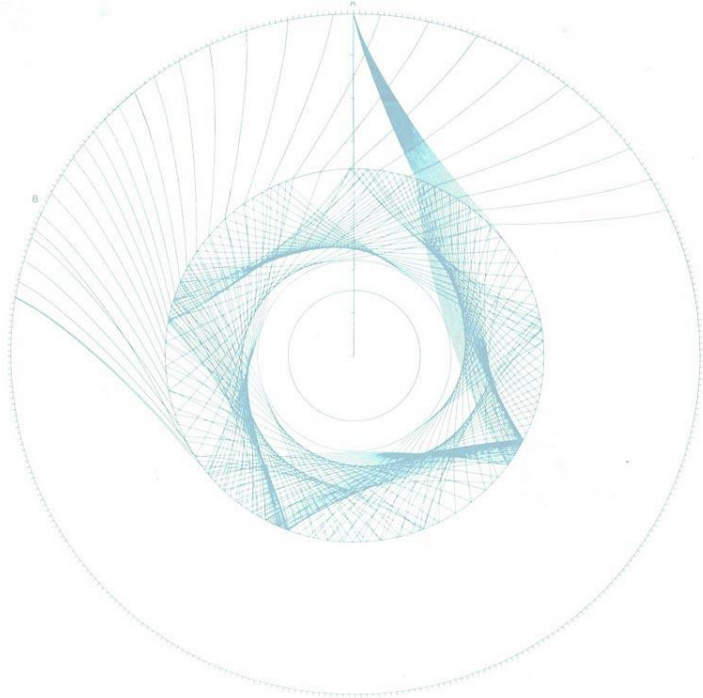
In2Earth : Geoscientific Modeling & Development for the Subsurface  
Analysis

**Geovariances** – Avon – Fontainebleau [www.Geovariances.com](http://www.Geovariances.com)

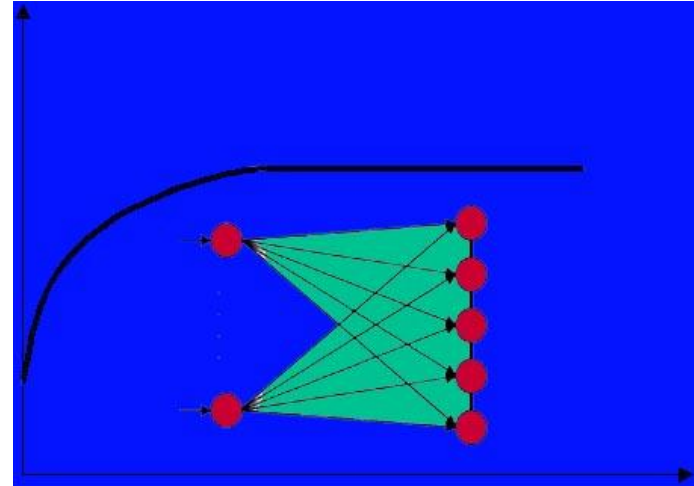
Worldwide number one in Geostatistical Studies. Vendor of the software „ISATIS“ used as main geostatistical modeling program from all most important international oil companies



# Petrophysic-Consultants



# GeoNeurale



GeoNeurale and Petrophysic-Consultants HEADQUARTERS GATE-GARCHING MUNICH-GARCHING





Campus Garching

gate Garchinger Technologie- und Gründerzentrum GmbH  
Lichtenbergstr. 8  
85478 Garching b. München

B11



Lichtenbergstr.

Chemie

Mensa

Am Coulombwall

Physik

James-Franck Str.

Neutronenquelle

Maschinenbau

ZIMT

Walther-Meißner-Str.

Mathematik und Informatik

Max-Planck-Gesellschaft

Freisinger Landstr.

A9

Zur Autobahn A9, Ausfahrt "Garching Nord" ca. 800m

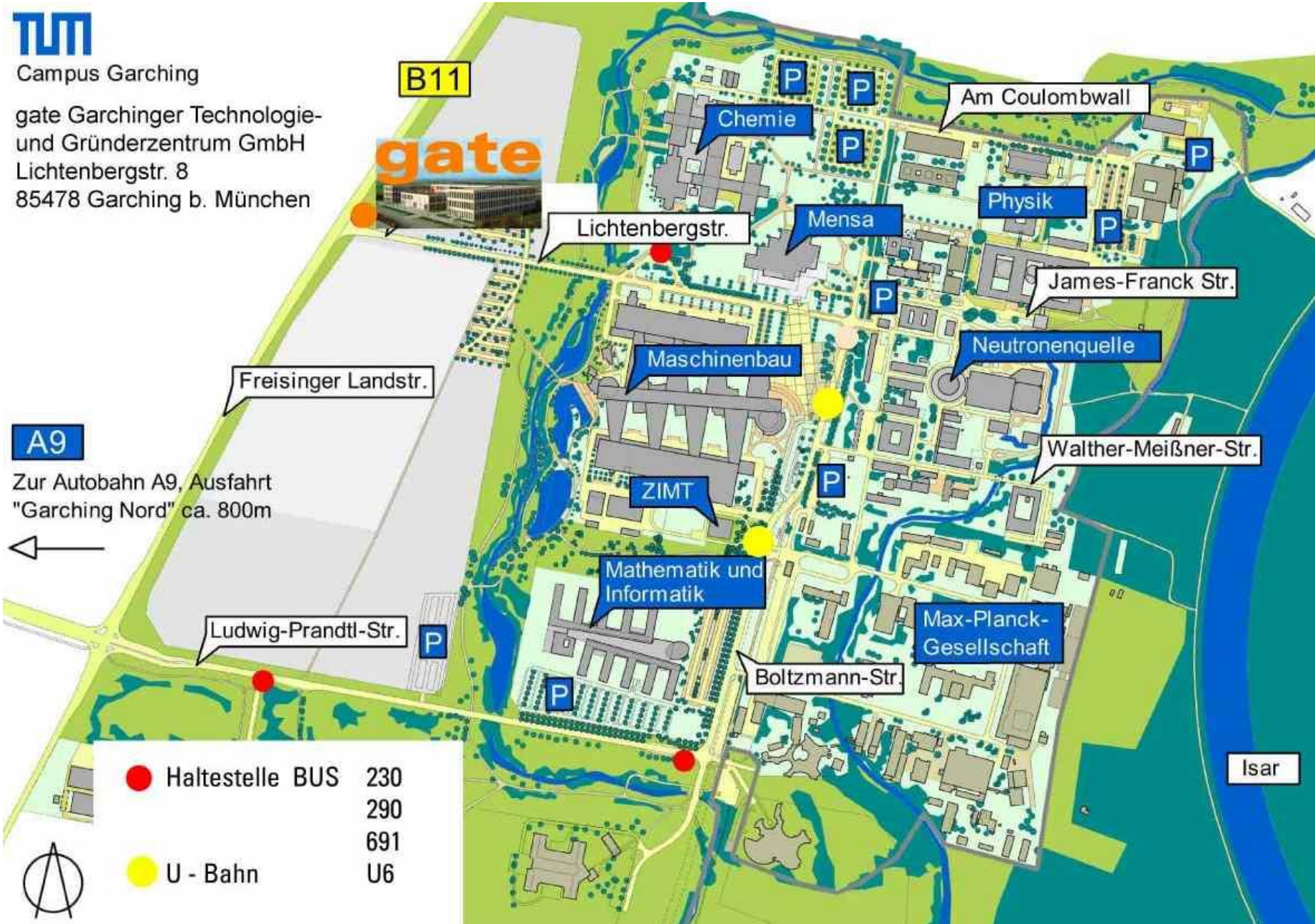


Ludwig-Prandtl-Str.

Boltzmann-Str.

Isar

- Haltestelle BUS 230  
290  
691
- U - Bahn U6



# Petrophysic-Consultants and GeoNeurale

Professional affiliations :

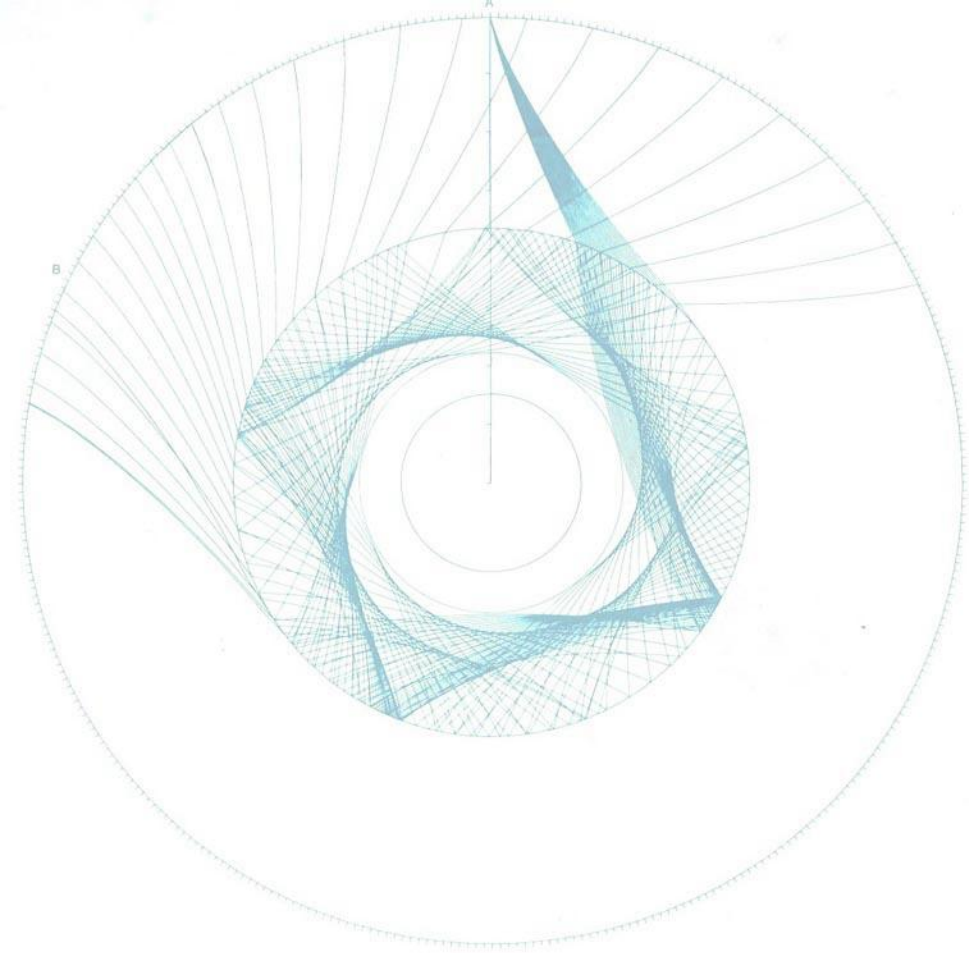
S.E.G. „ THE SOCIETY of EXPLORATION GEOPHYSICISTS „

S.P.W.L.A. „ THE SOCIETY of PETROPHYSICISTS  
and  
WELL LOG ANALYSTS „

S.P.E. „ THE SOCIETY of PETROLEUM ENGINEERS „

S.C.A. „ THE SOCIETY of CORE ANALYSTS „

GtV „ THE GERMAN GEOTHERMAL ASSOCIATION „



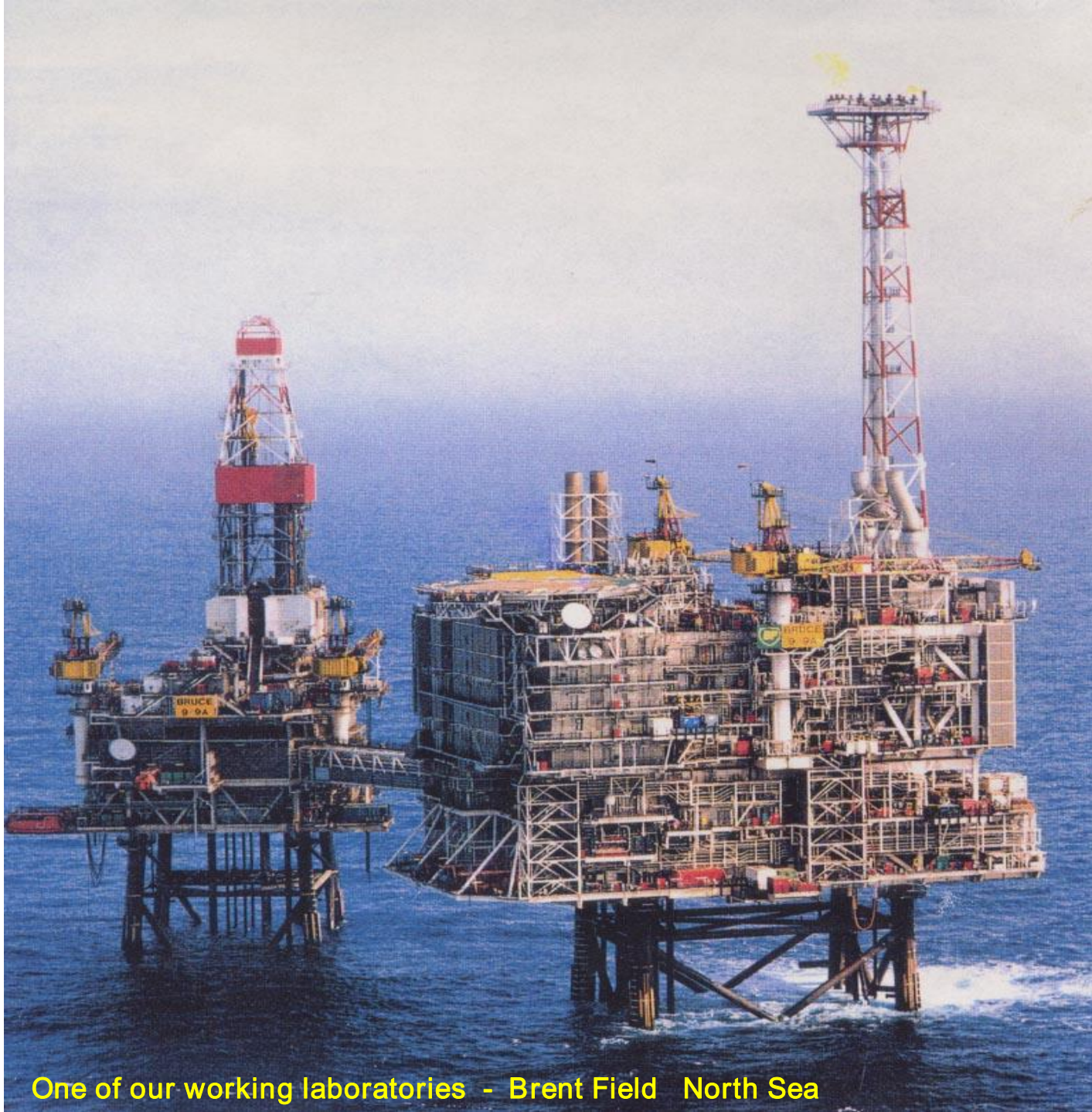
The operative phase

# The Operative Phase

**Experience: More than 60 deep drilling projects**

- To a maximal depth of over 7500 m
- Vertical, directional, horizontal drilling
- In clastic, carbonate and vulcanic formations
- Data measurements, realtime measurements and drilling operations





One of our working laboratories - Brent Field North Sea



One of our working laboratories - North Sea Danish Sector



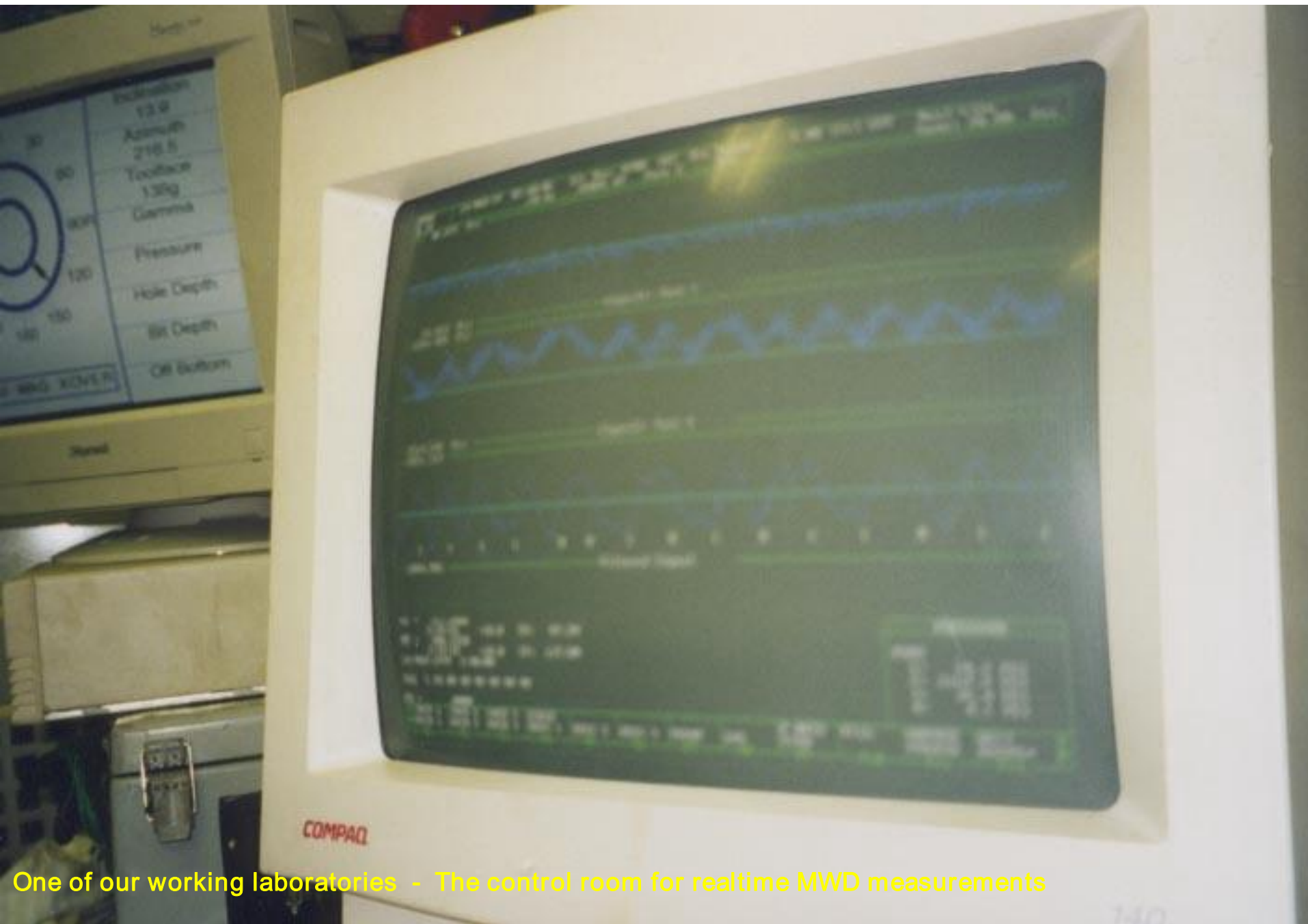
One of our working laboratories - Gulf of Mexico Alabama Sector



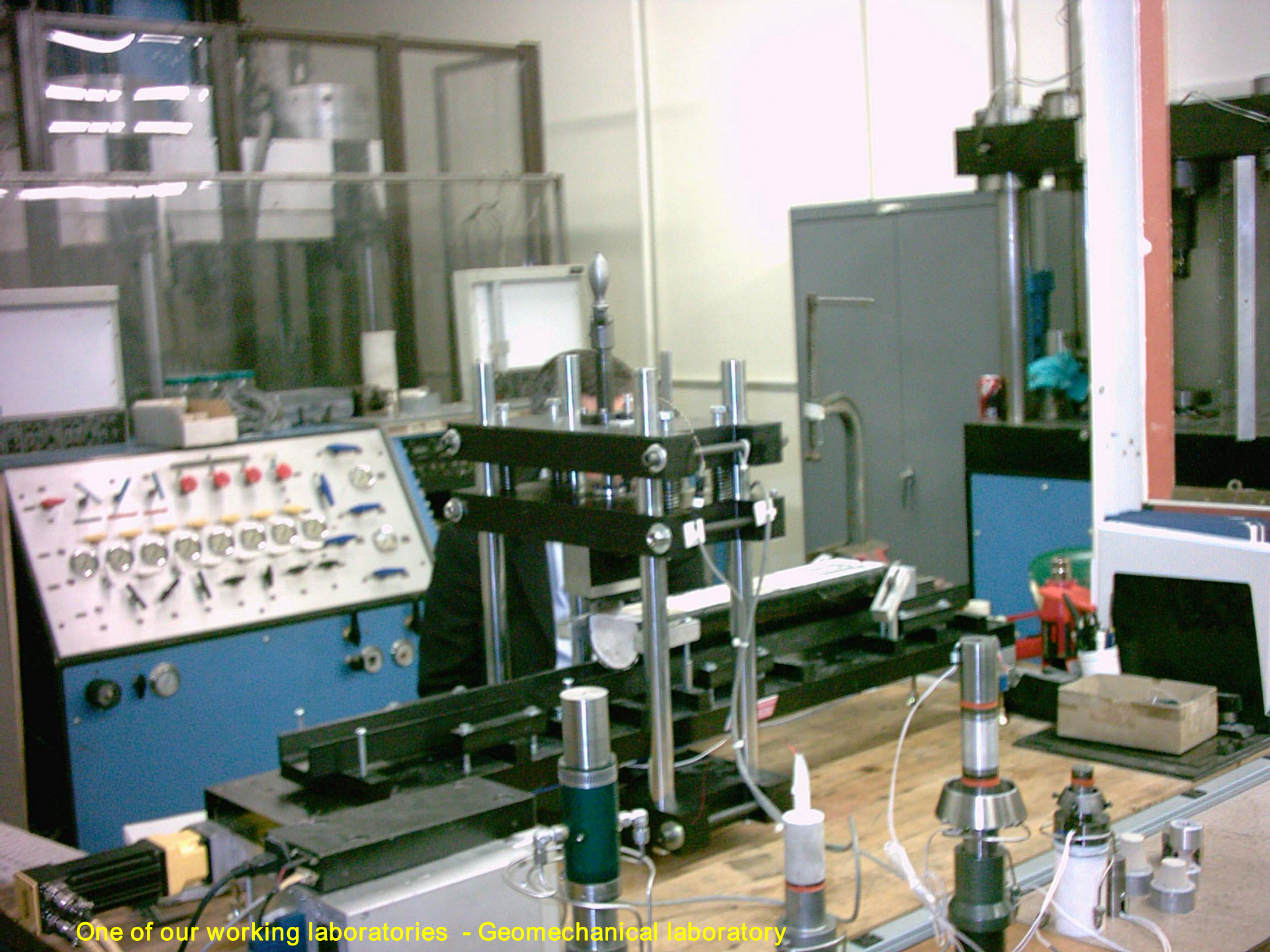
One of our working laboratories - a research rig Dallas Texas



One of our working laboratories - Electromagnetic Resistivity Collars - Niedersachsen - Germany



One of our working laboratories - The control room for realtime MWD measurements



One of our working laboratories - Geomechanical laboratory



**Test Information**

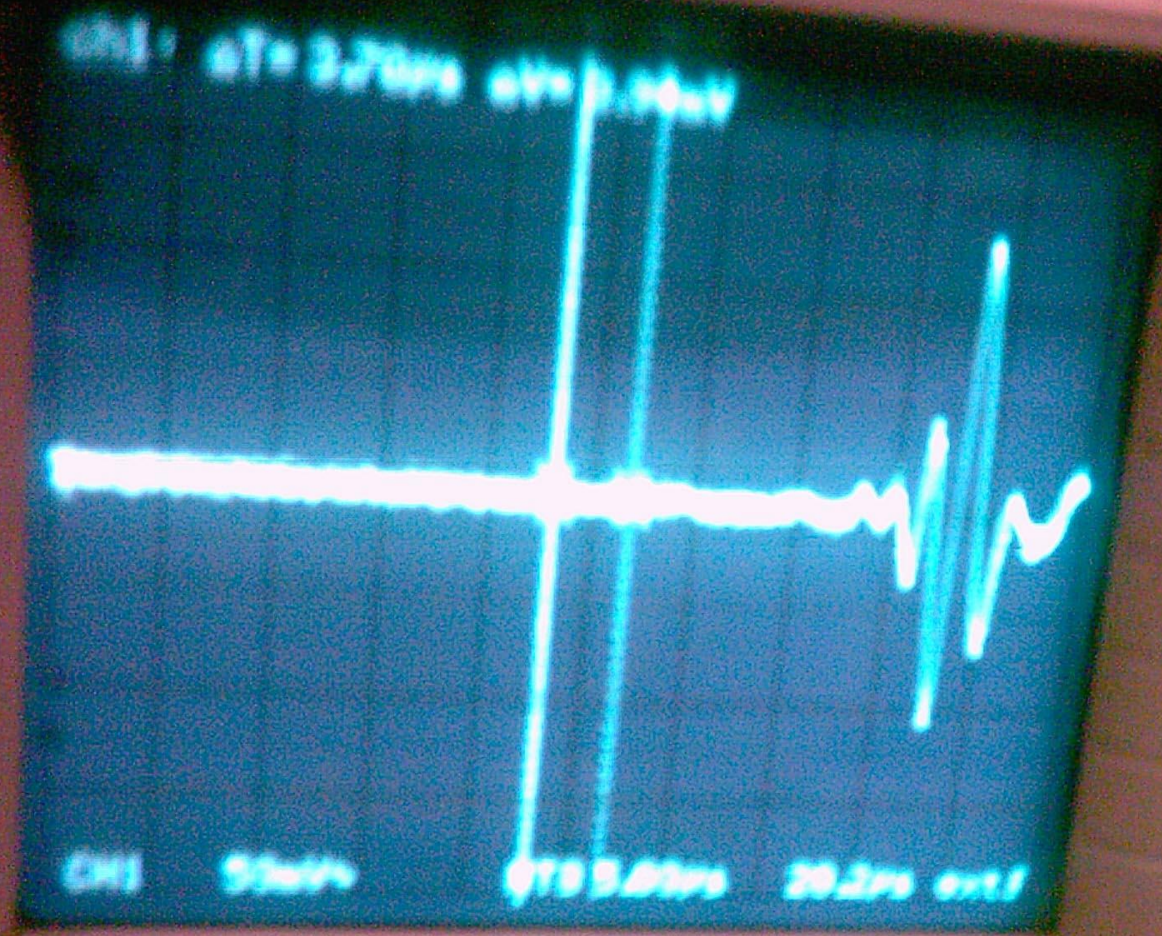
Test ID	1000
Rock ID	700
Comment	map5 cut#12
Current File	C:\Composite\1000 2.dat
Depth of Cut	0.34 (mm)
Cut Length	510.0 (mm)
Groove #	2
Horizontal	0.0 (mm)

**Position Controls**

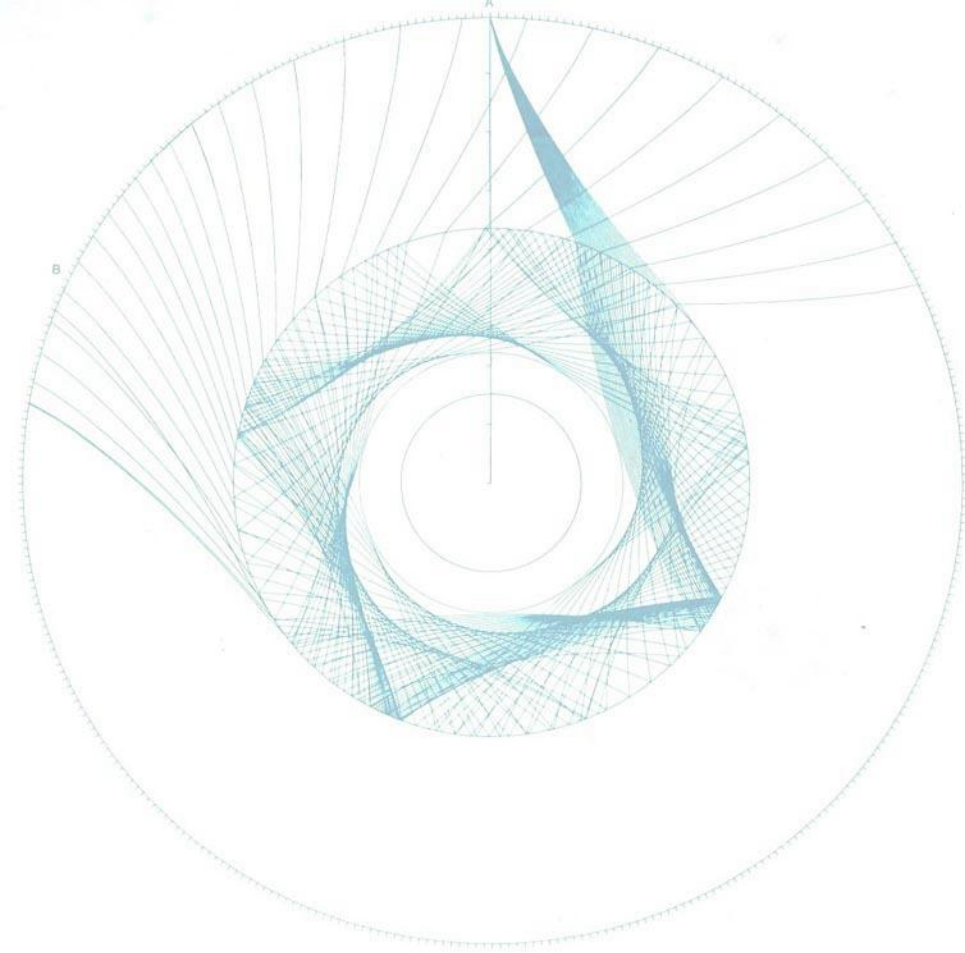
Stop Motion

One of our working laboratories - Geomechanical laboratory





One of our working laboratories - Geomechanical laboratory

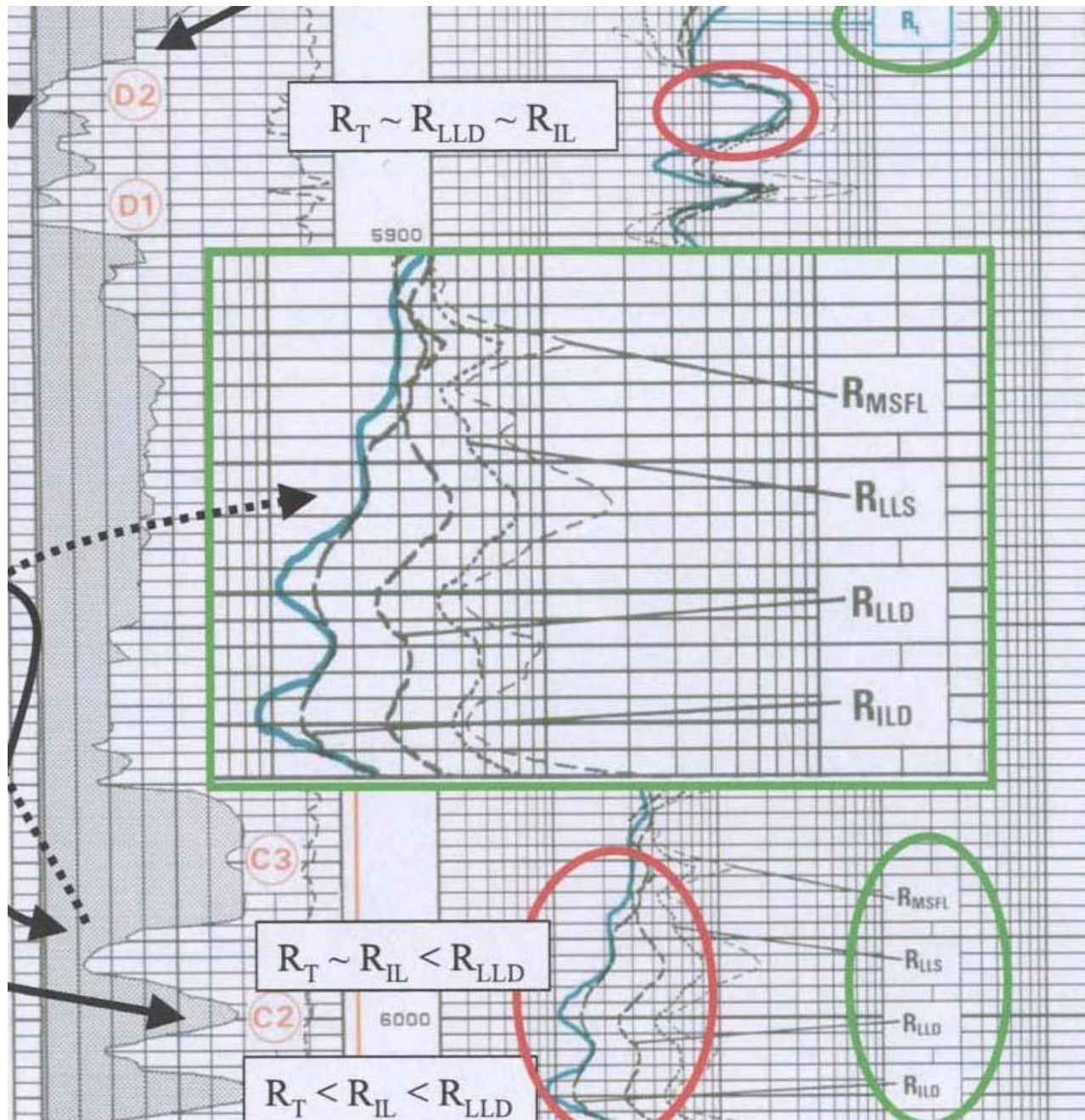


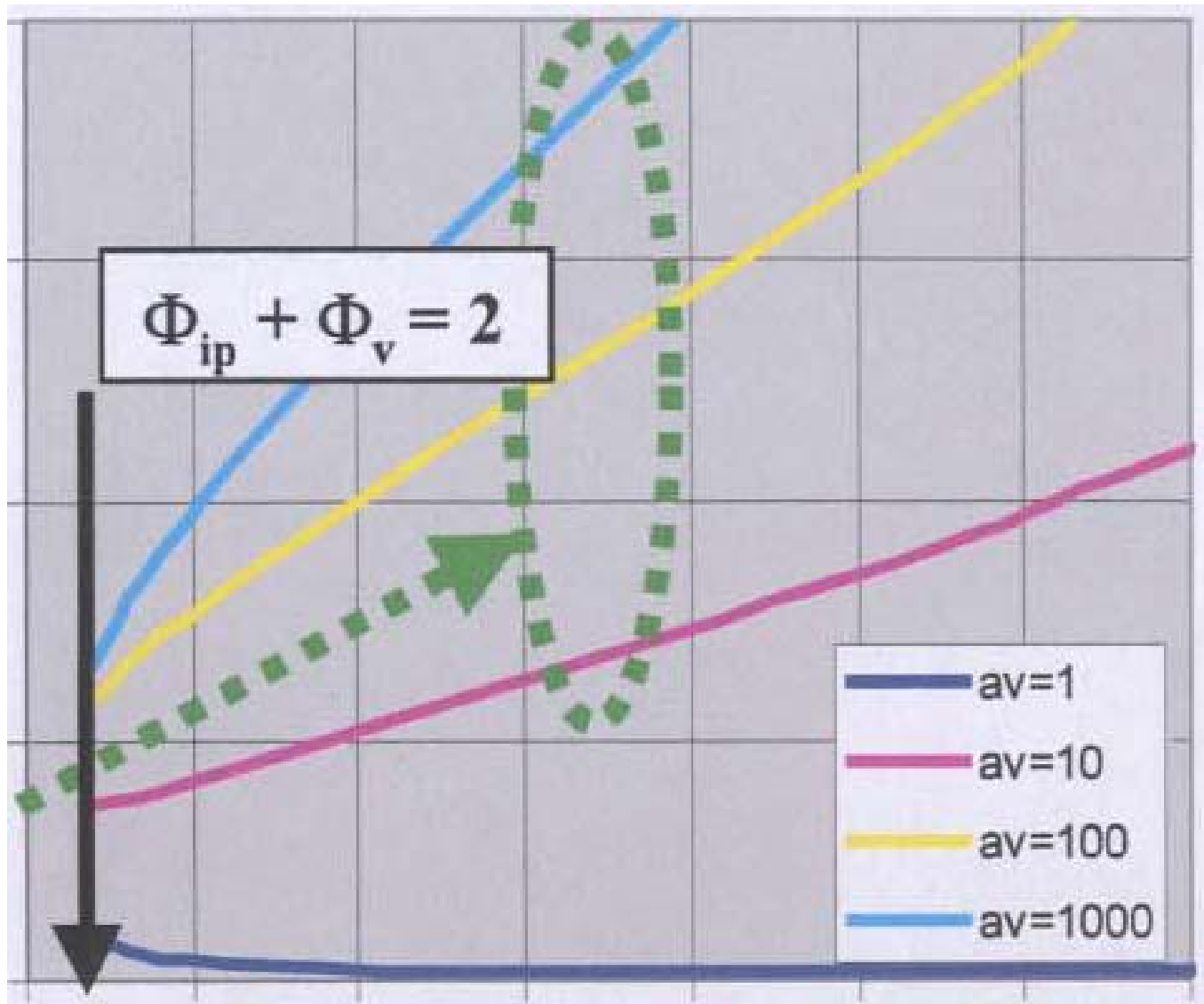
# Multidisciplinary Integrated Reservoir Analysis

# Multidisciplinary Integrated Reservoir Analysis

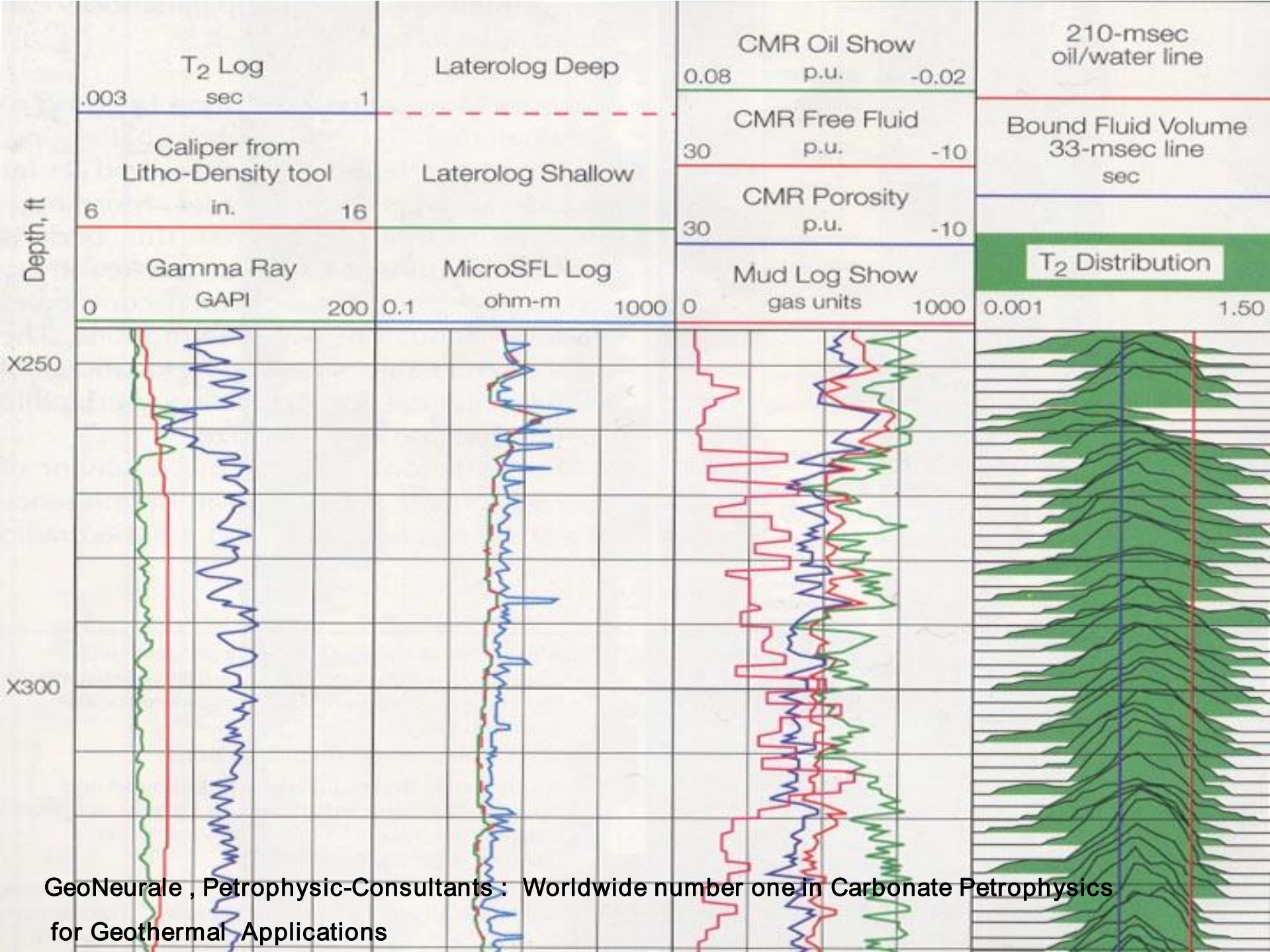
## The Petrophysical and Seismic Integration

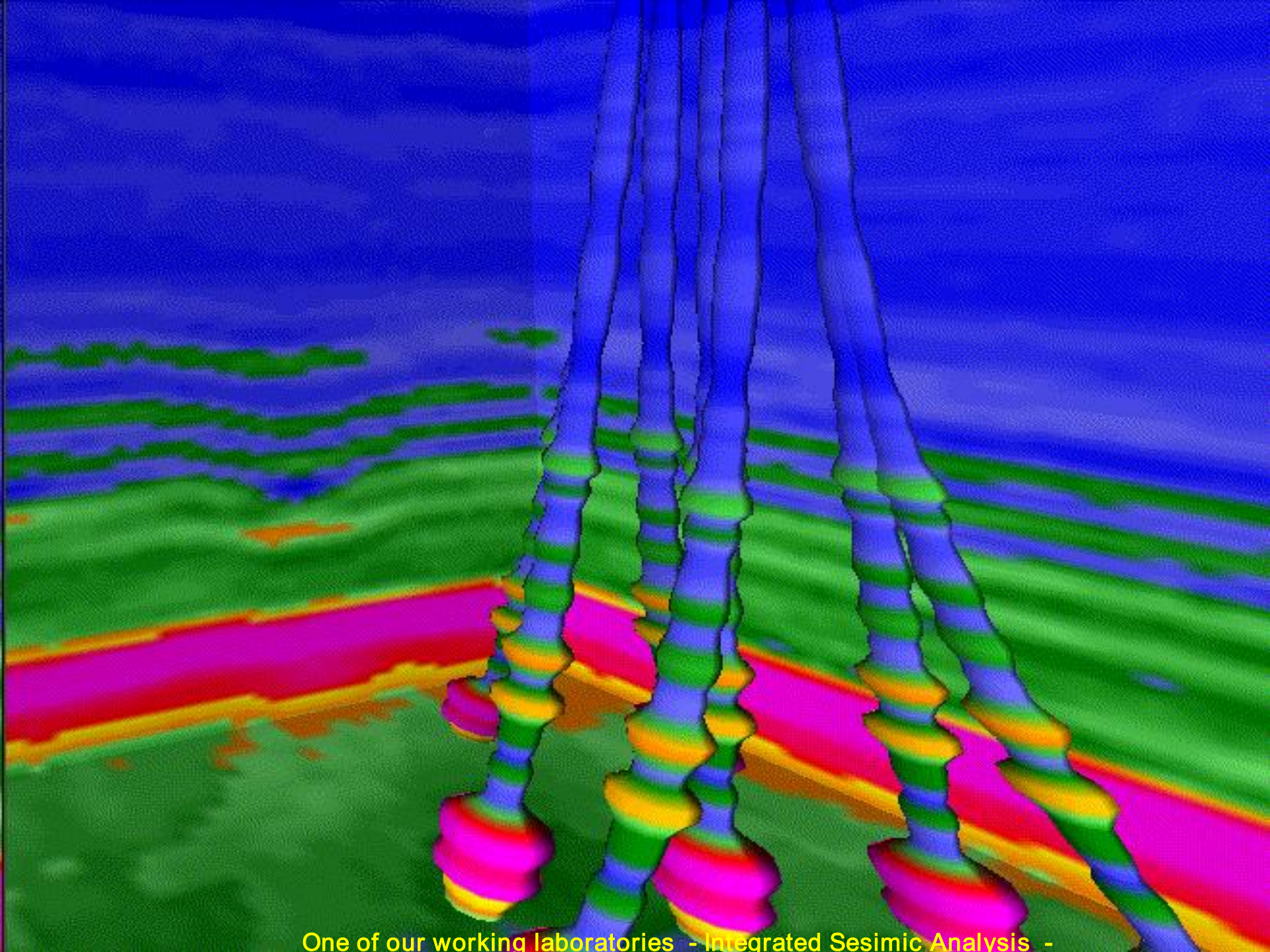
- Our consultants have between 20 and more than 30 years experience
- World top Petrophysicists, Geophysicists and Geologists



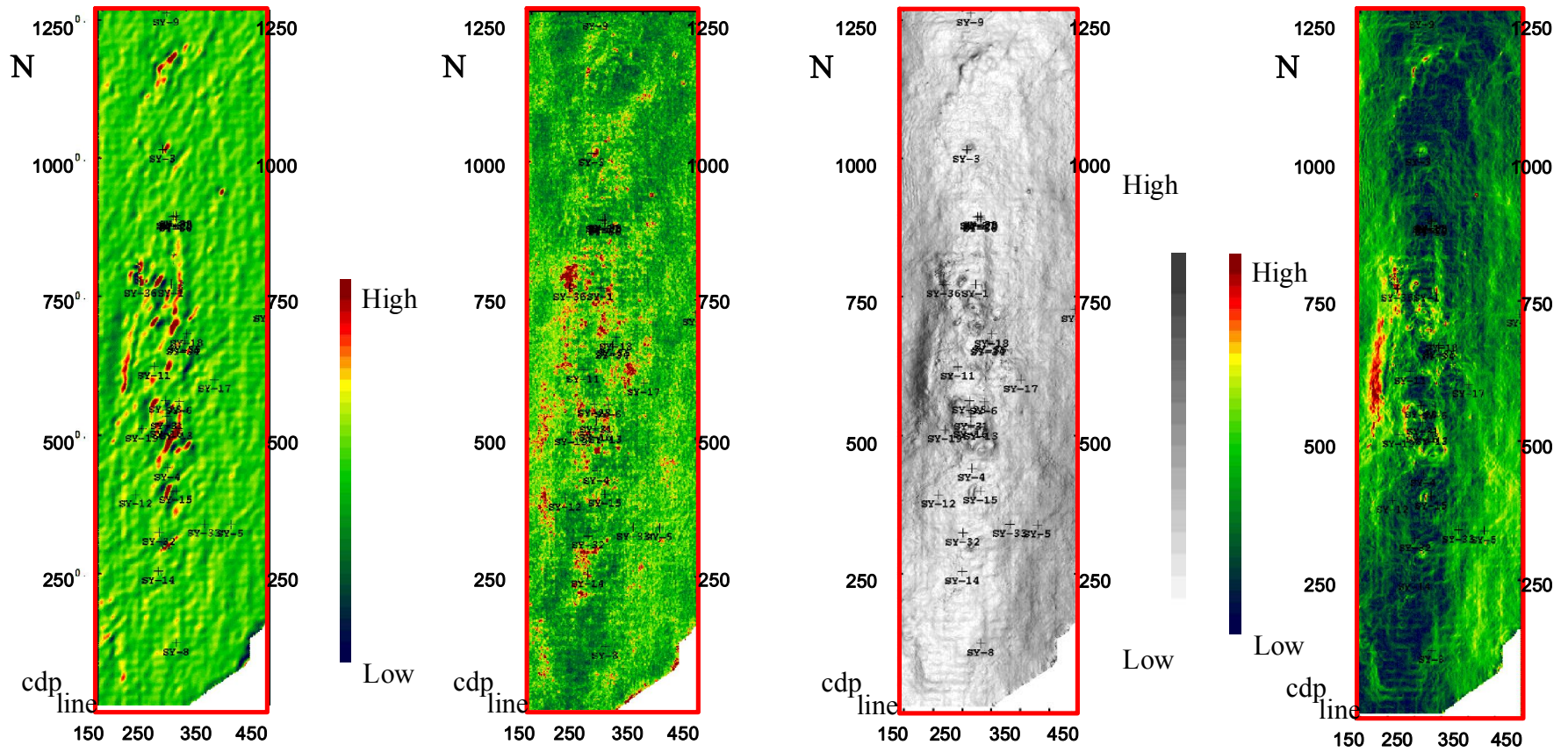


GeoNeurale , Petrophysic-Consultants : Worldwide number one in Carbonate Petrophysics for Geothermal Applications





One of our working laboratories - Integrated Seismic Analysis -



Curvature

Dissimilarity

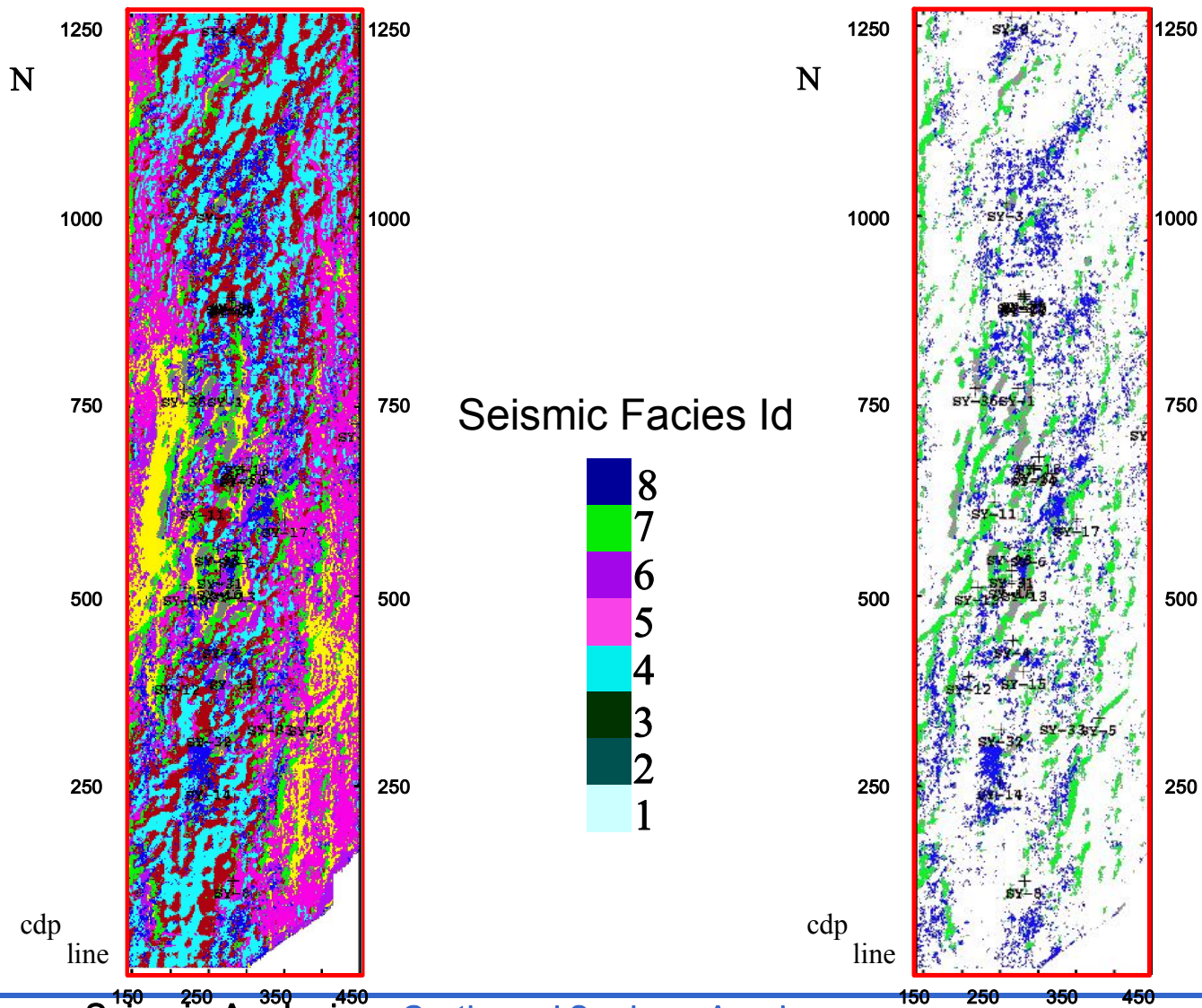
Dip

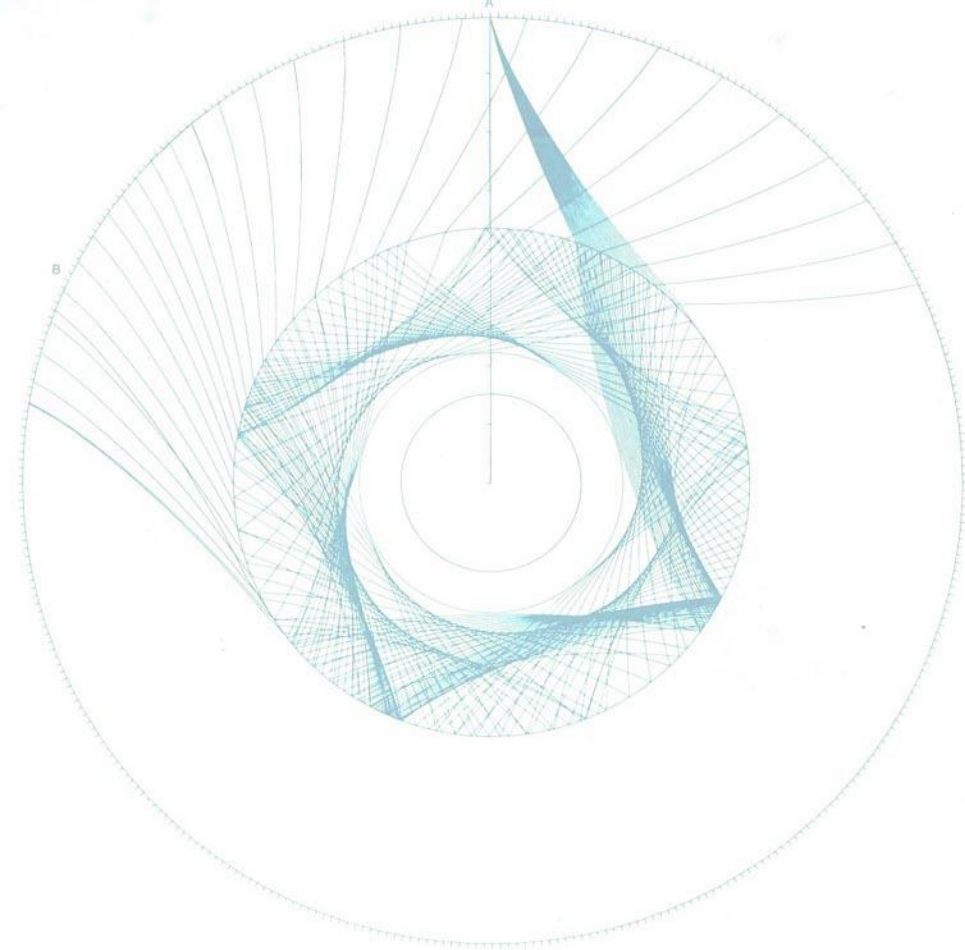
Edge

From our Seminars : Seismic Analysis



## Extraction of seismic facies with high potential of fracture occurrence





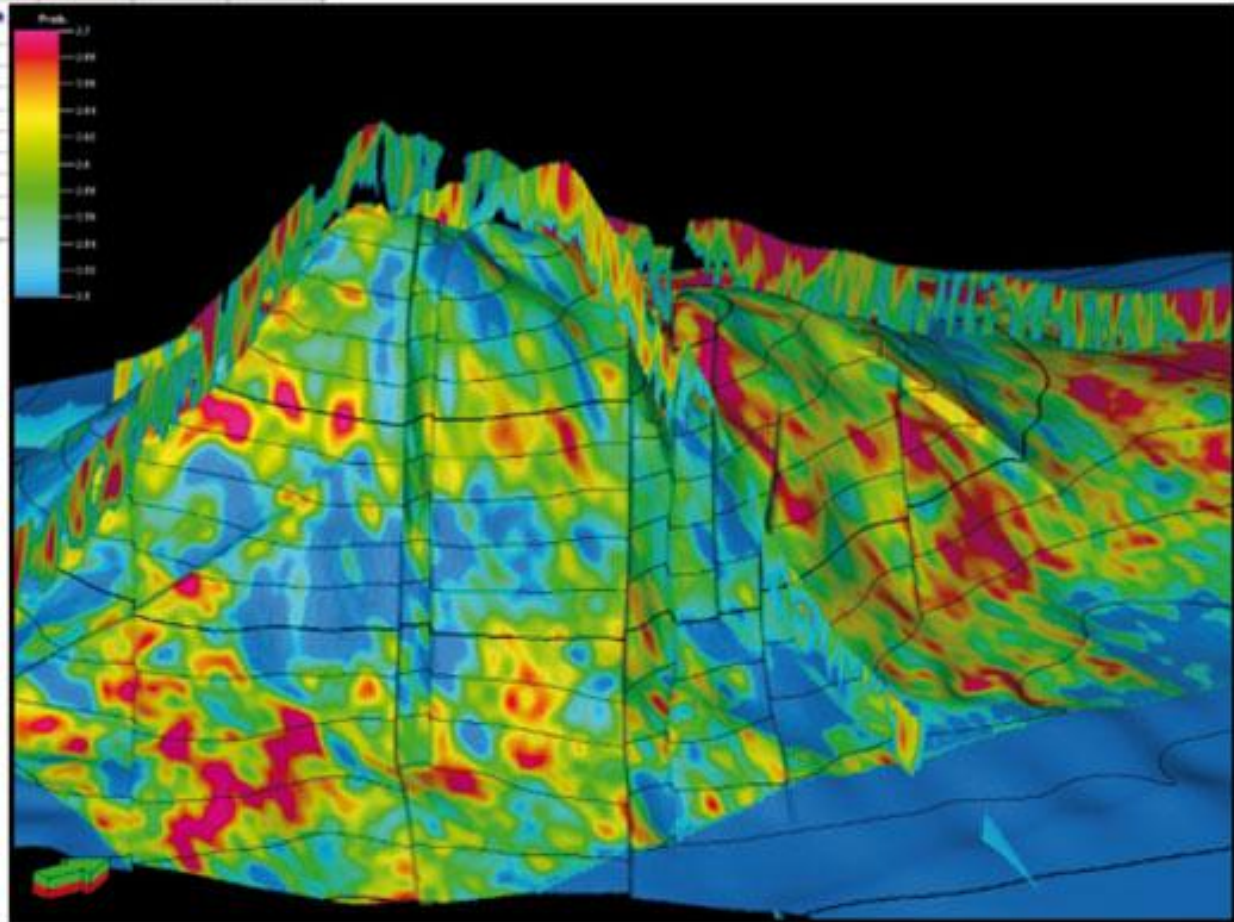
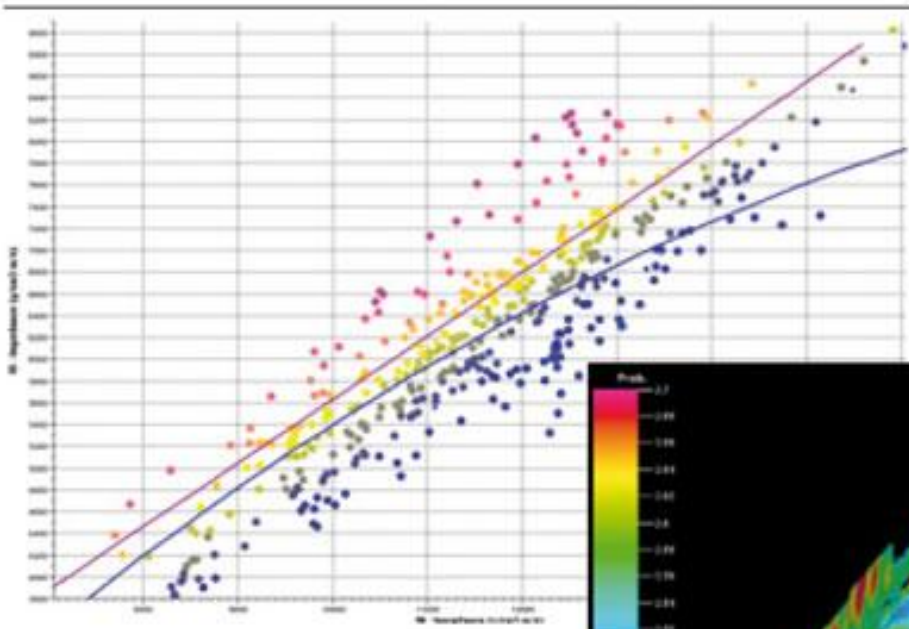
Reservoir characterization

3D static and dynamic simulation

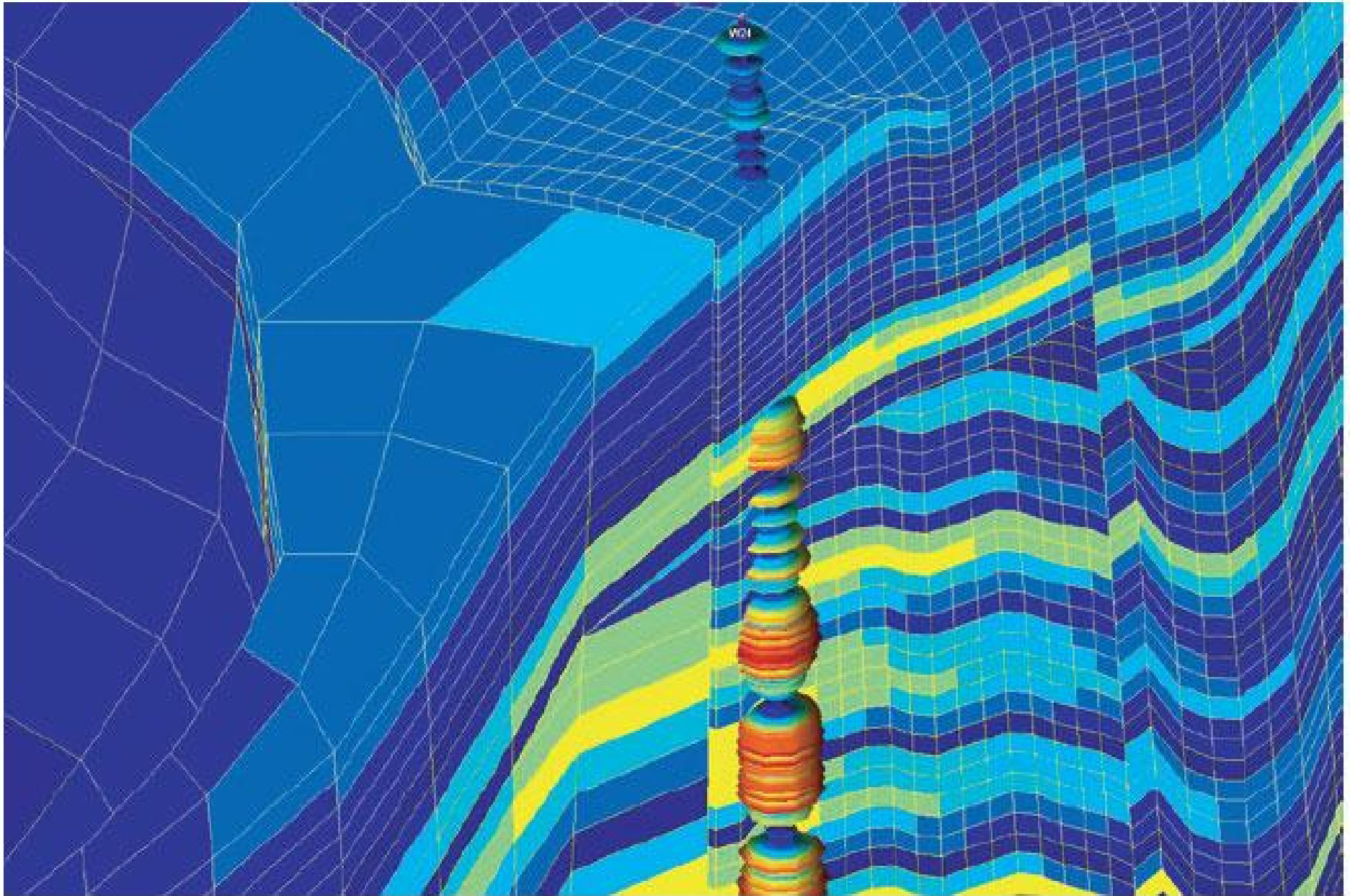
# Reservoir characterization - 3D static and dynamic simulation

## From the Petrophysical - Seismic Integration to the Static and Dynamic Model

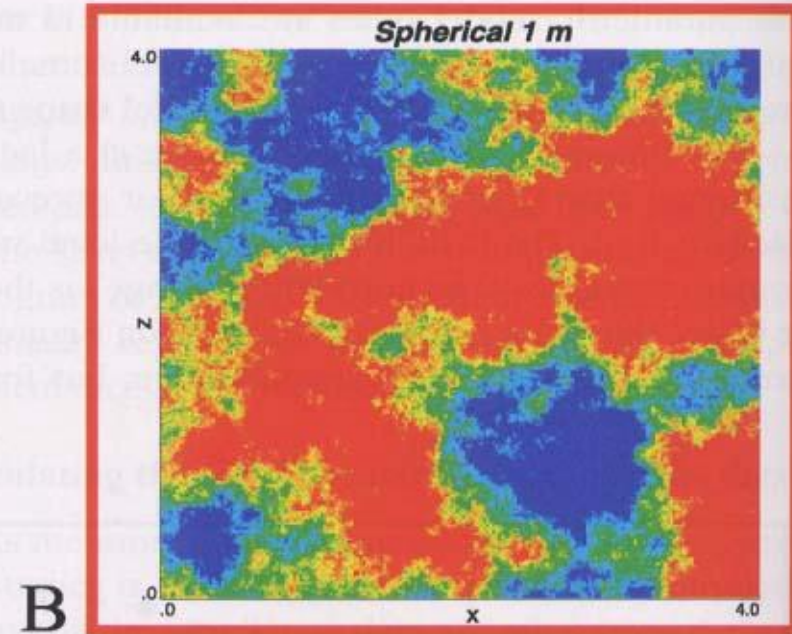
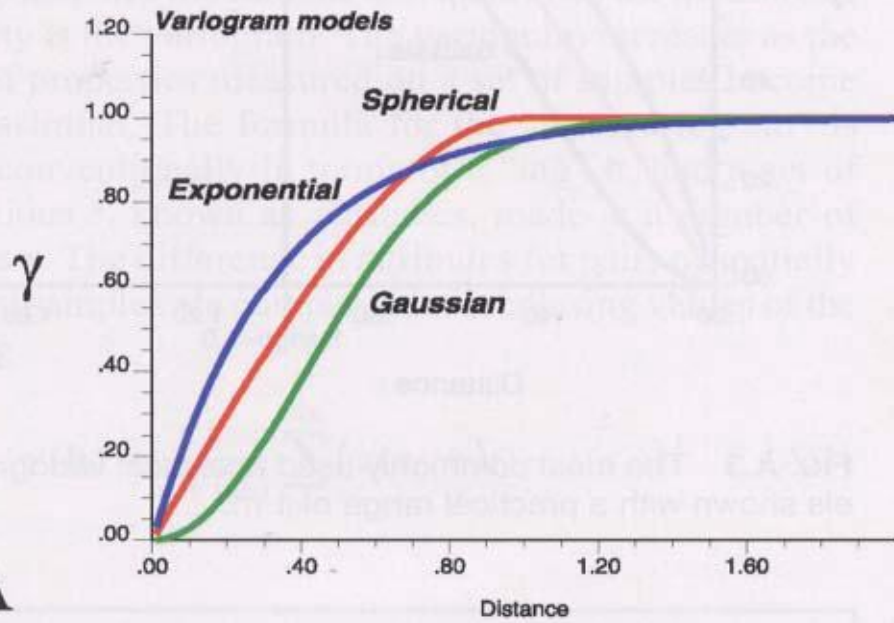
- Our consultants have between 20 and more than 30 years experience
- World top Petrophysicists, Geophysicists and Geologists



One of our working laboratories - Integrated Sesimic Analysis -

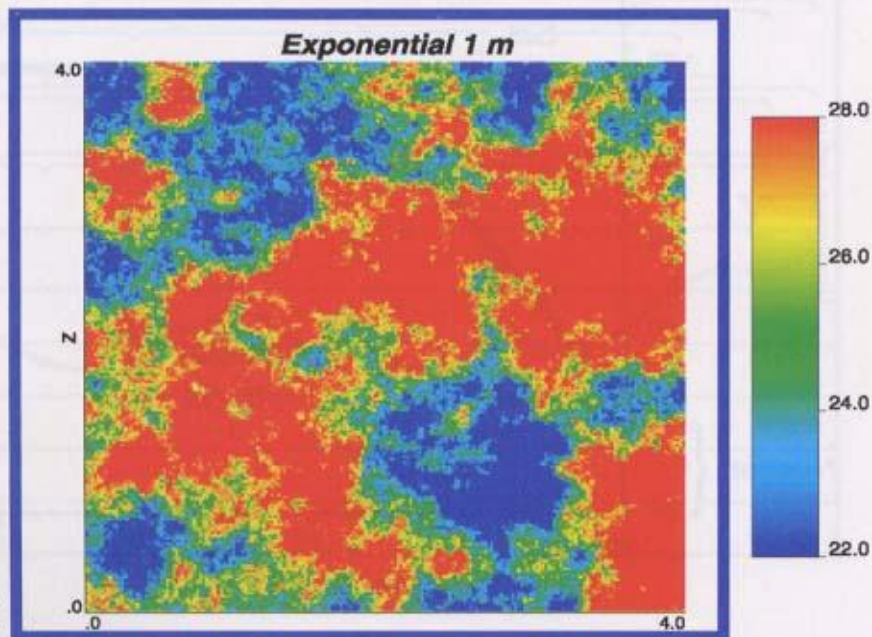


One of our working laboratories - Upscaling of Petrophysical Properties -

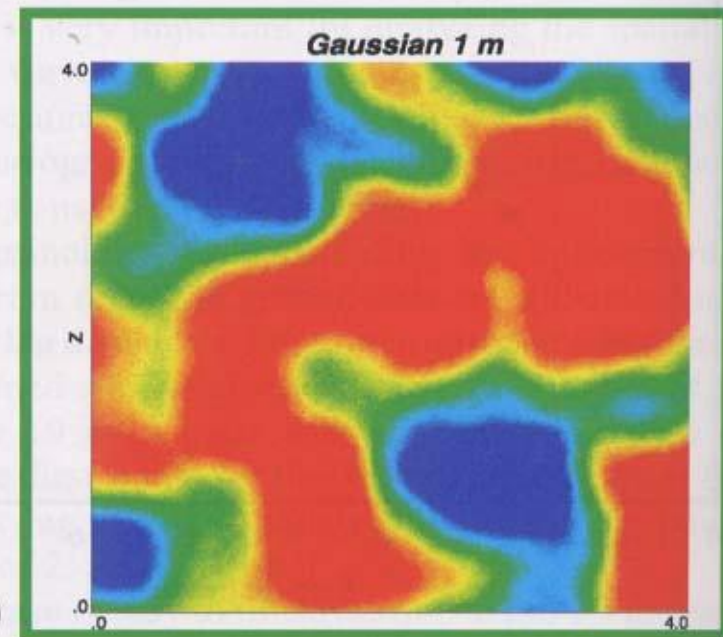


**A**

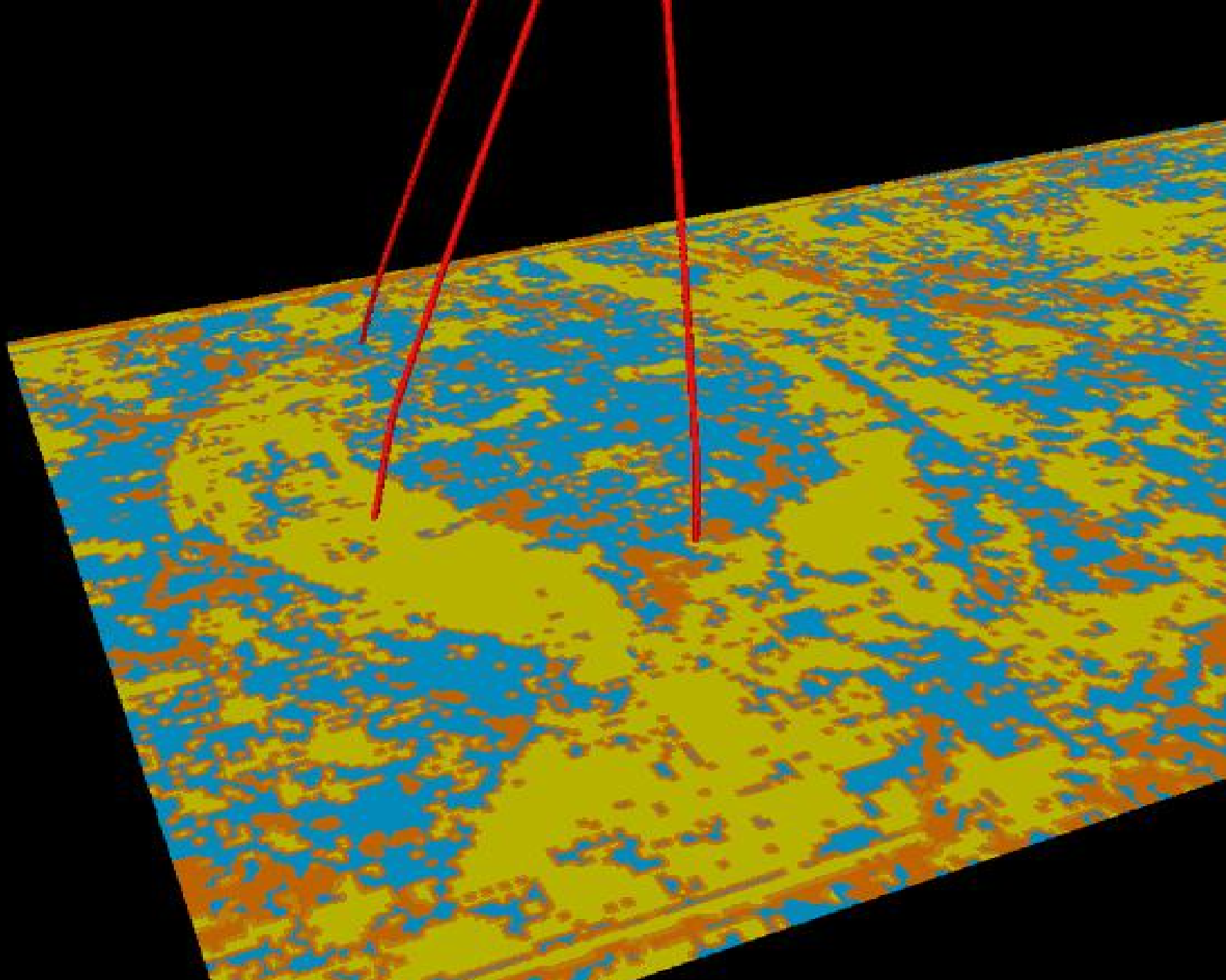
**B**



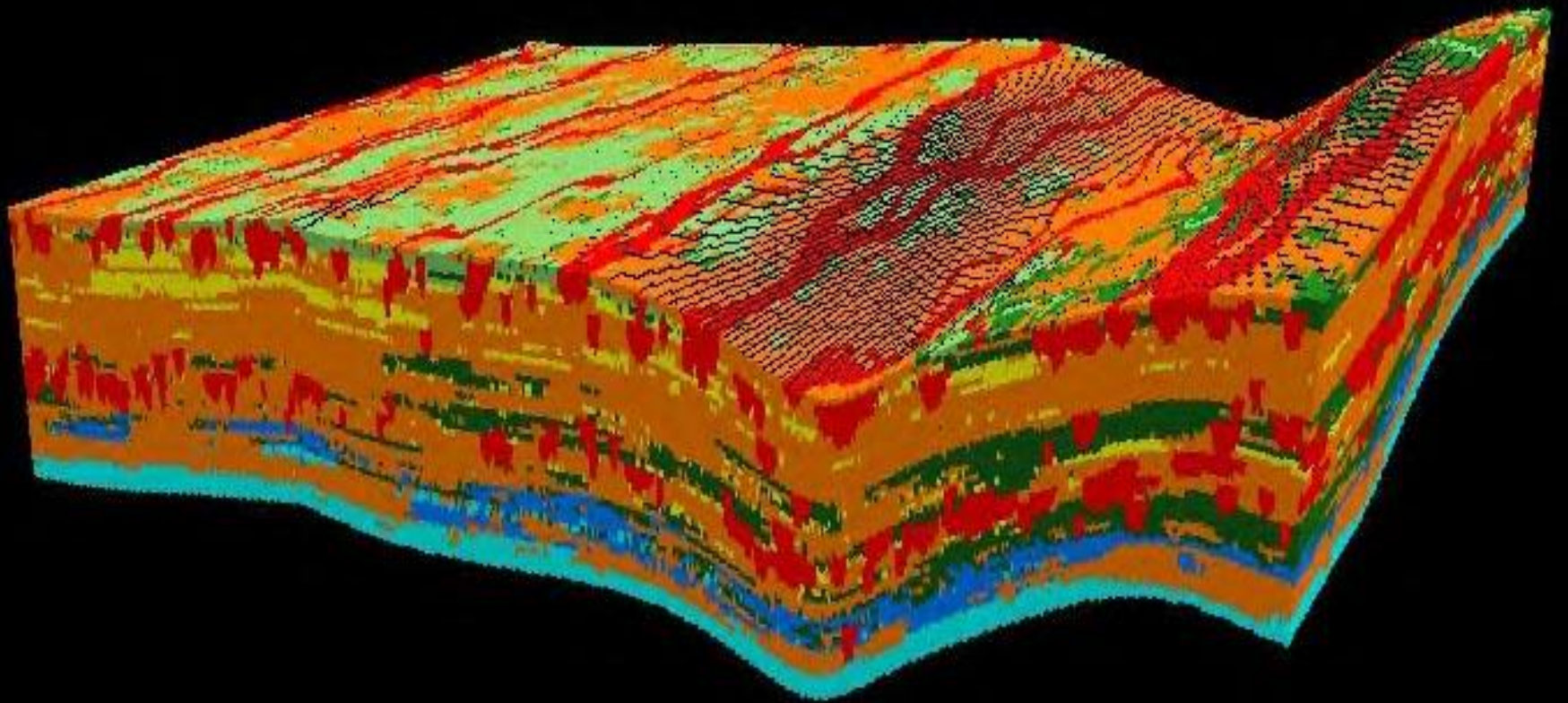
**C**



**D**

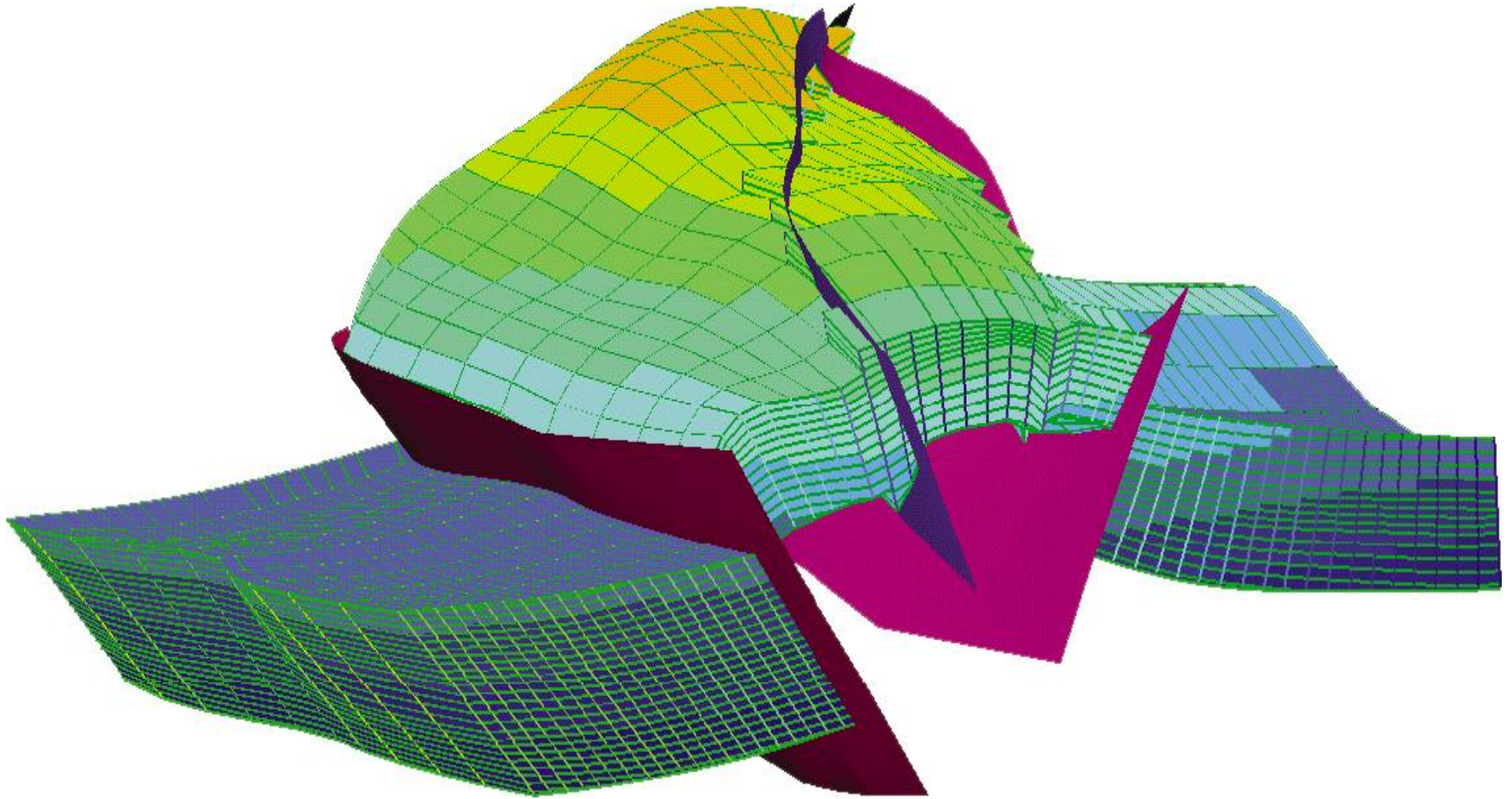


One of our working laboratories - Integrated Sesimic Analysis -

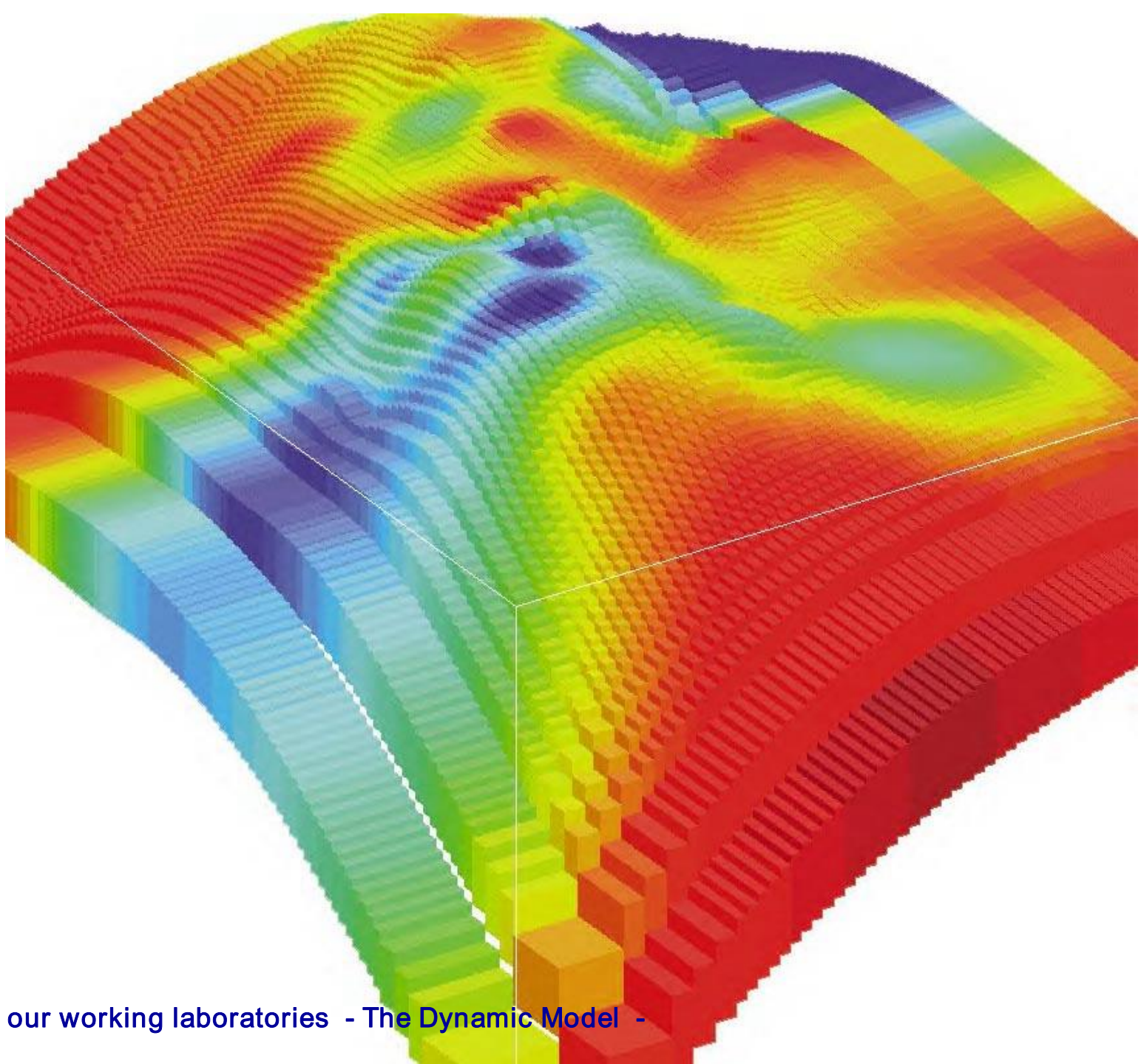


One of our working laboratories - The Static Model -

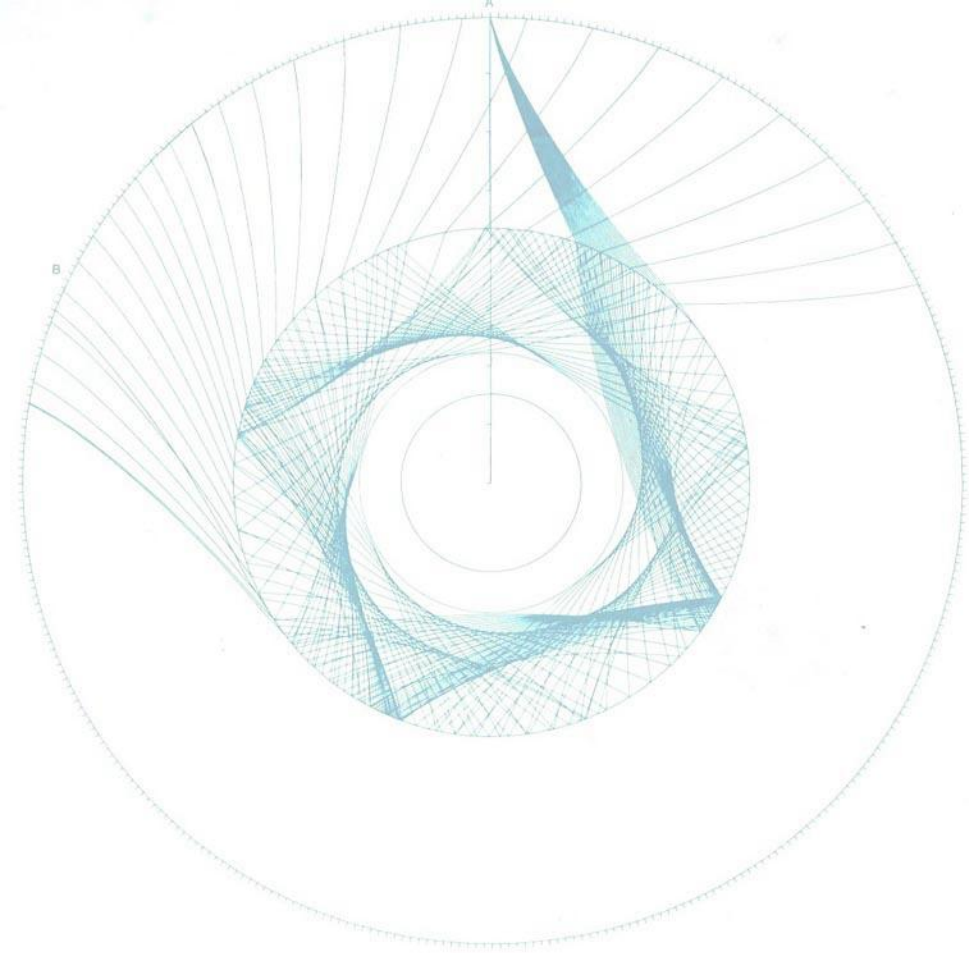




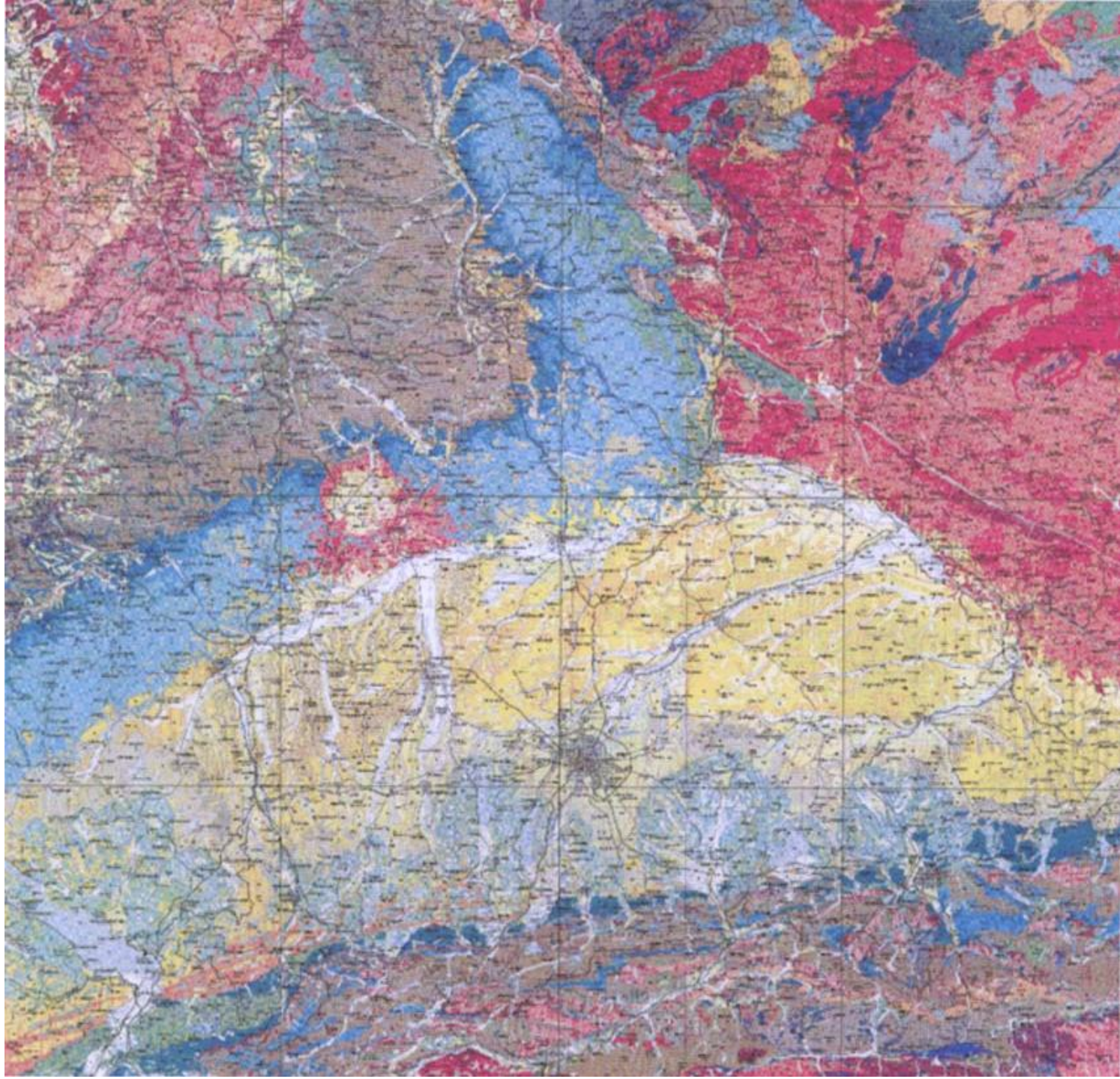
One of our working laboratories - The Dynamic Model -



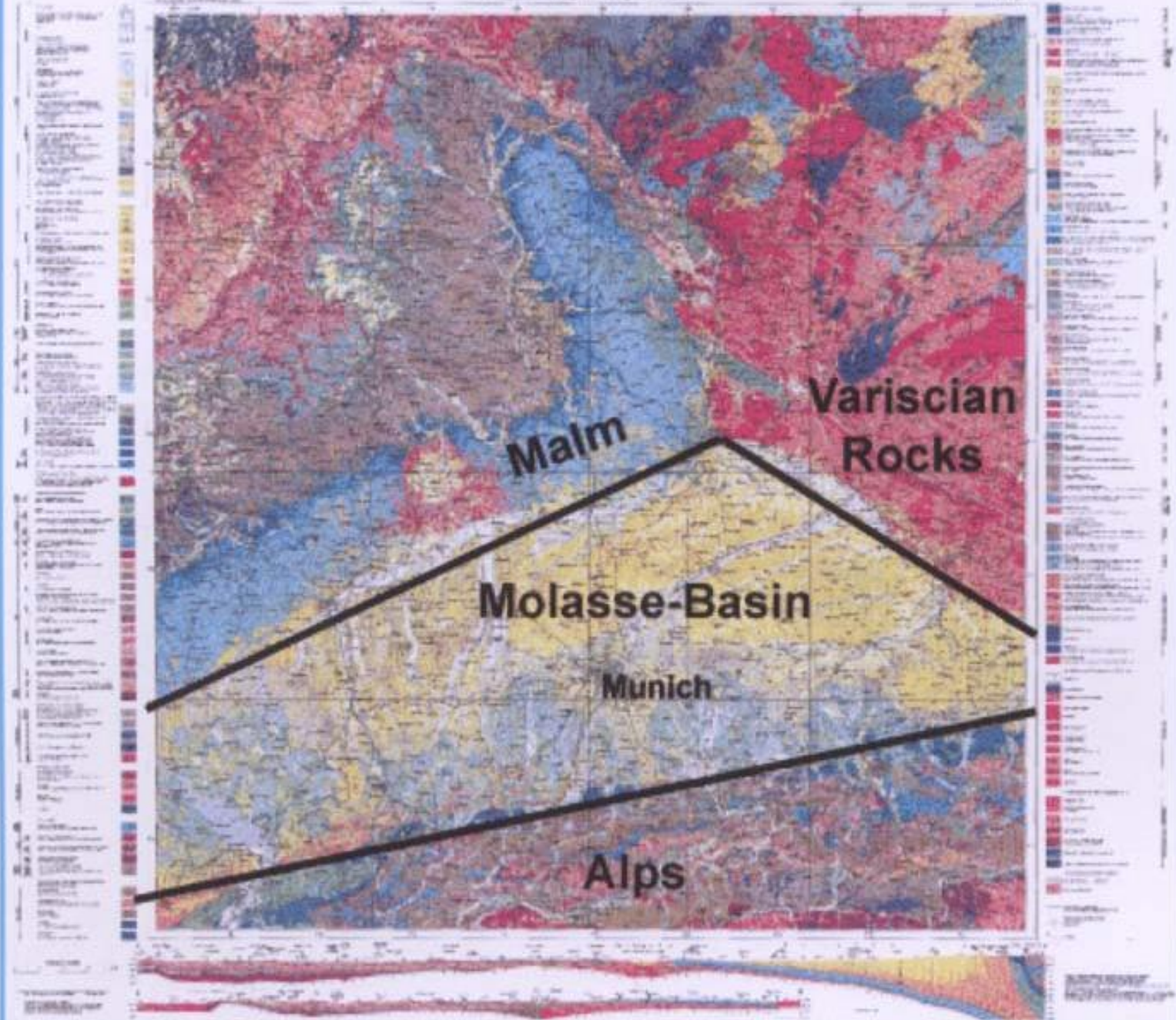
One of our working laboratories - The Dynamic Model -



## The Bavarian Malm



GEOLOGISCHE KARTE VON BAYERN 1:500000  
Geographisches Institut für Bergbauwissenschaften



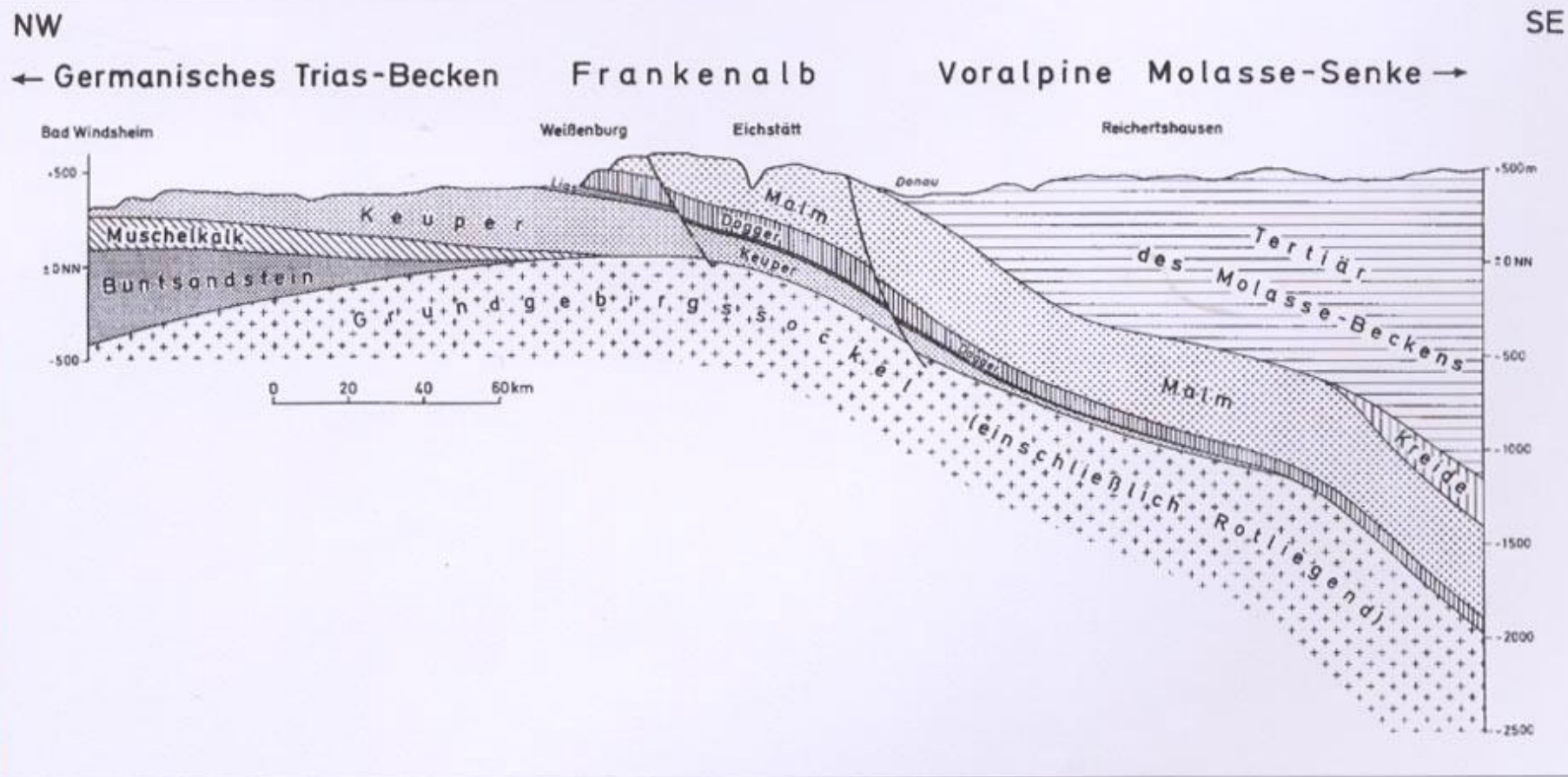


Fig 3.: Section from the "Schichtstufenland" in the northwest to the Molasse-Basin in the southeast. Southeast from the Danube the Malm descends under the Molasse. Sketch, height enlargend.

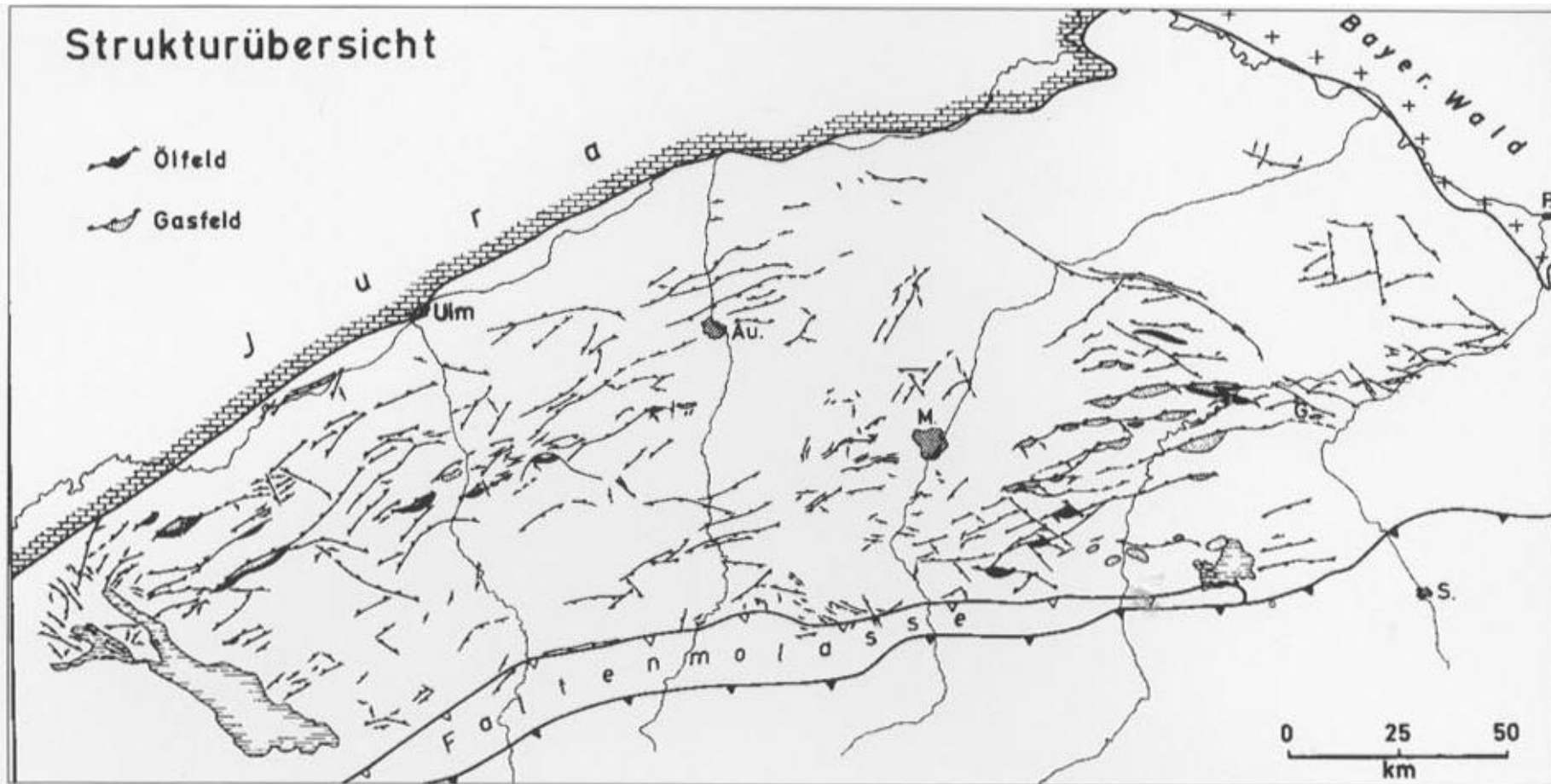
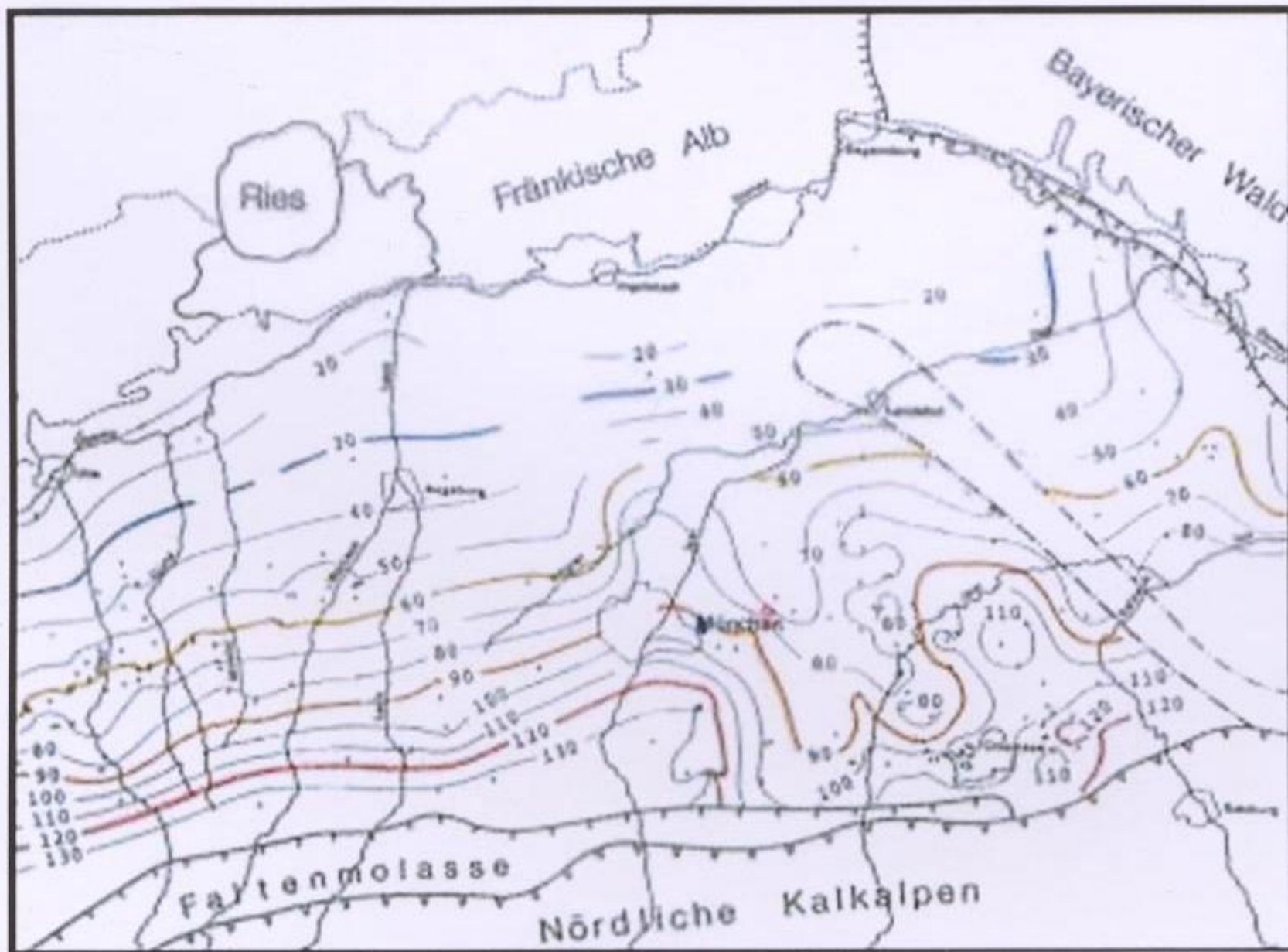
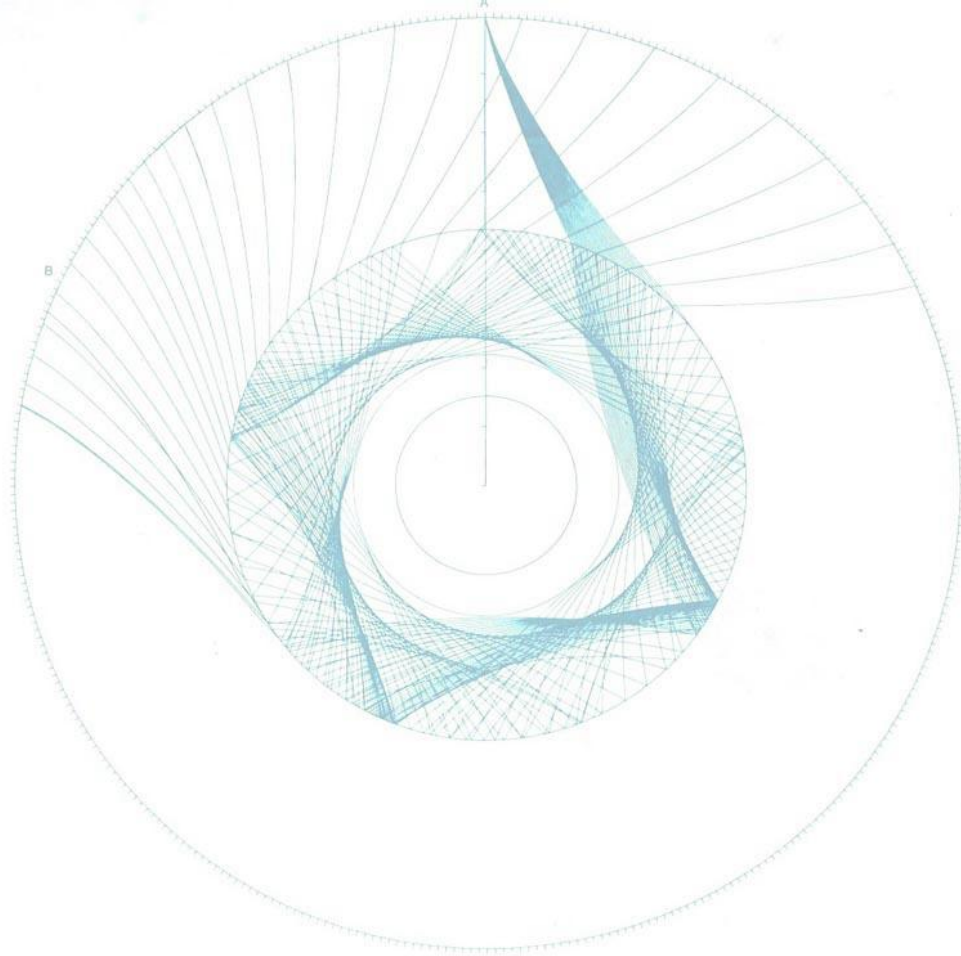


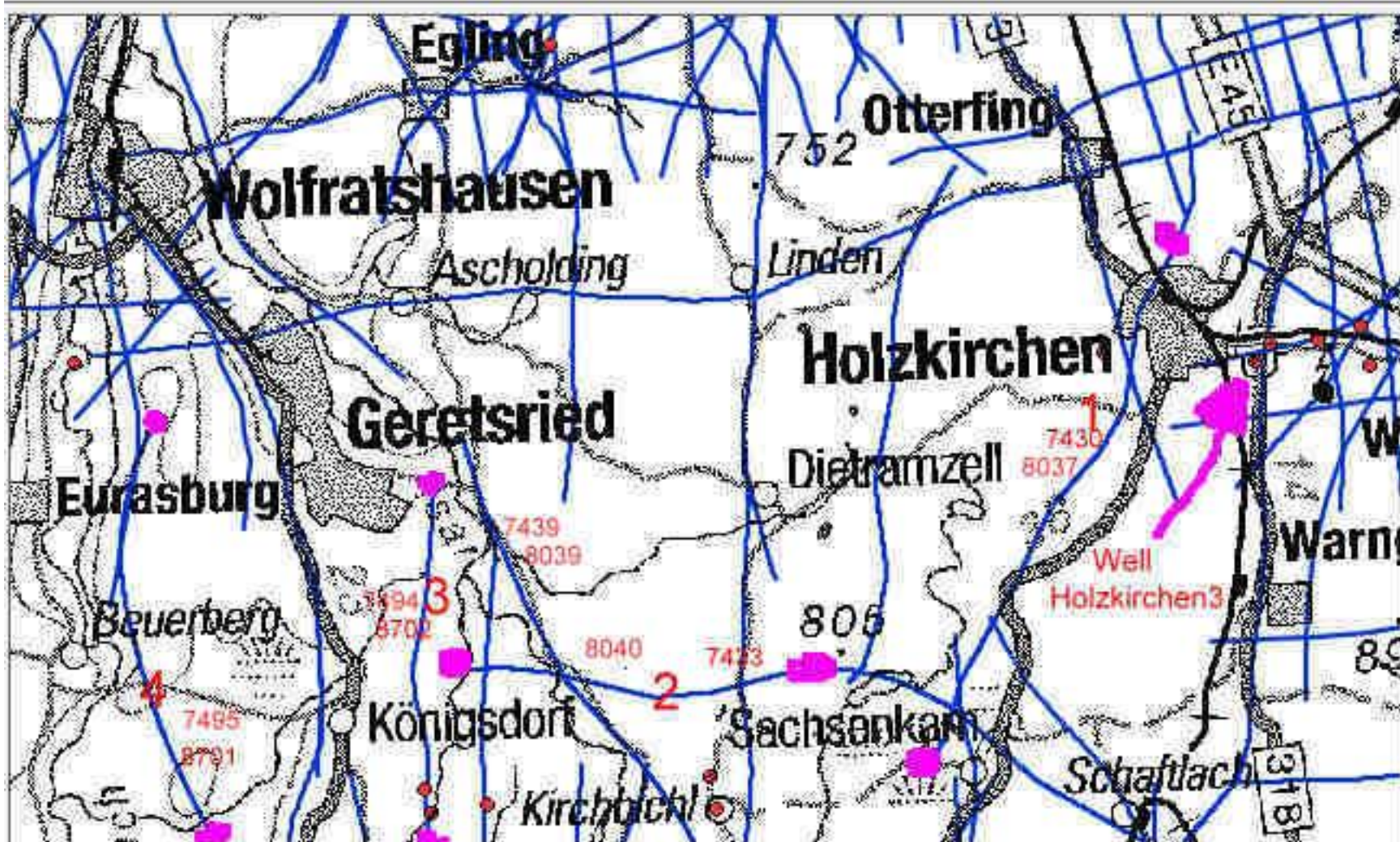
Fig. 6: Structural sketch of the Molasse-Basin. M is Munich, with grey patches marking Oil- and Gasfields. (Lemke, 1988: Das Bayerische Alpenvorland vor der Eiszeit)







# The Project Königsdorf



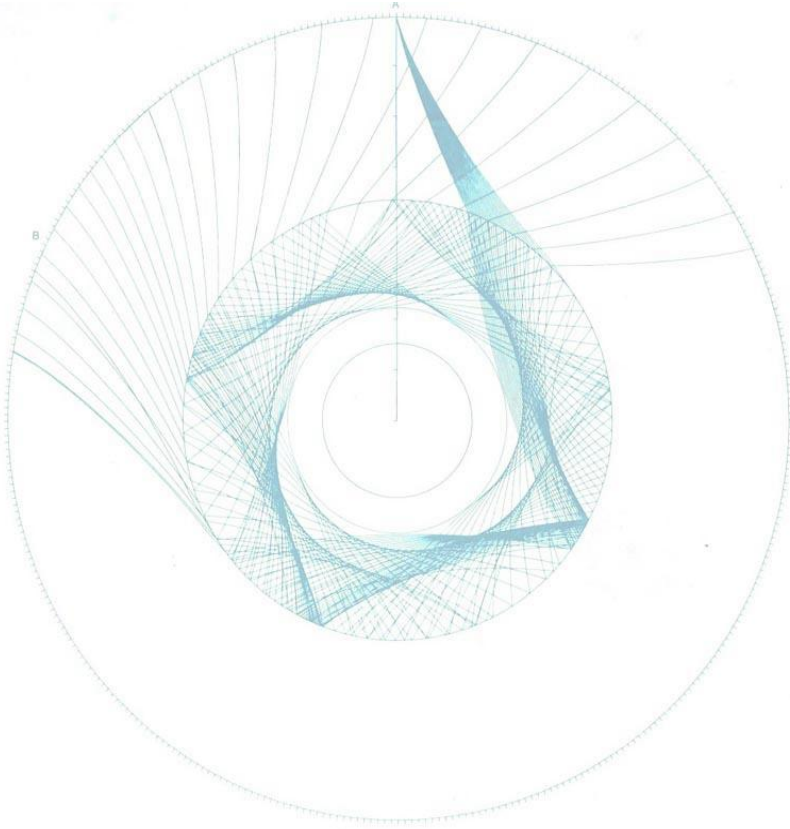
Maßstab: 1 : 132.924

# Project Königsdorf

**Petrophysic-Consultants** for the first time will introduce a

**CONVERGENT INTEGRATED ANALYSIS** study :

Petrophysical Interpretation at the microscale and Seismic Interpretation at the macroscale, integrated with geostatistical analysis to produce a high resolution Static Model of the Reservoir and Target Area.



# Petrophysic-Consultants

Lichtenbergstrasse 8

85748 München - Garching

T +49 (0) 89 5484 0

T +49 (0) 89 8969 1118

F +49 (0) 89 8969 1117

[www.petrophysic-consultants.de](http://www.petrophysic-consultants.de)